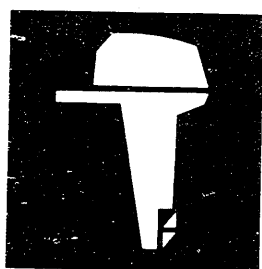


YAMAHA

parts list 1978



outboard
motor

serial no.

28A S : 150101 and up

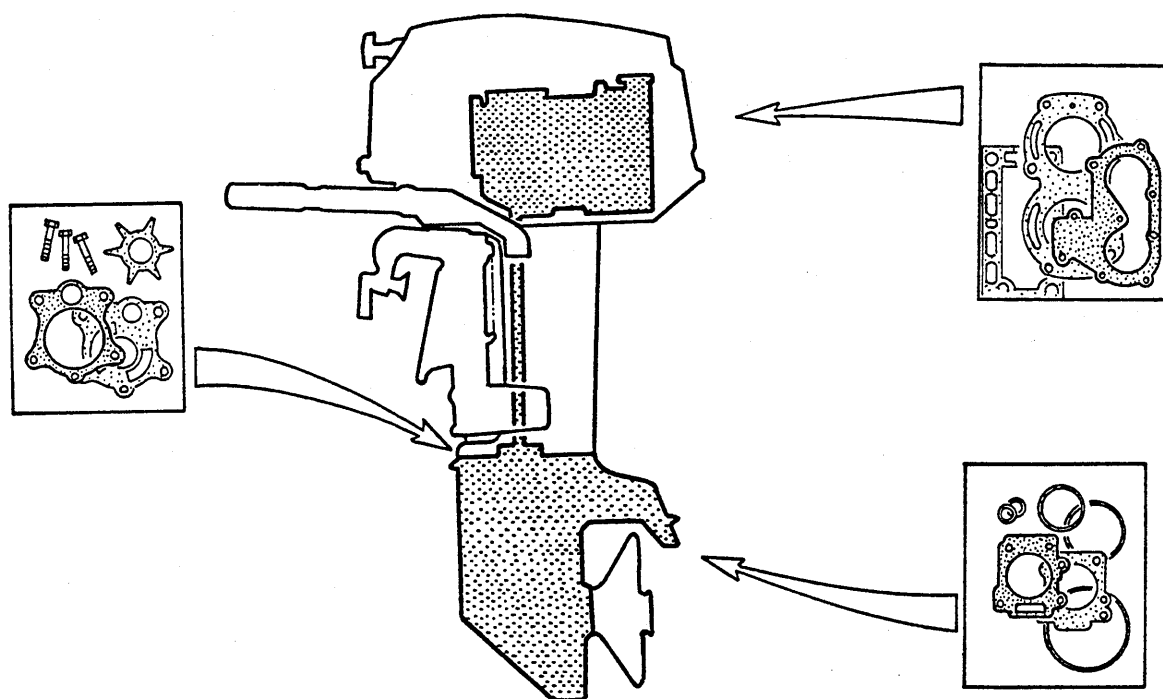
L : 450101 and up

28AES : 270101 and up

L : 570101 and up

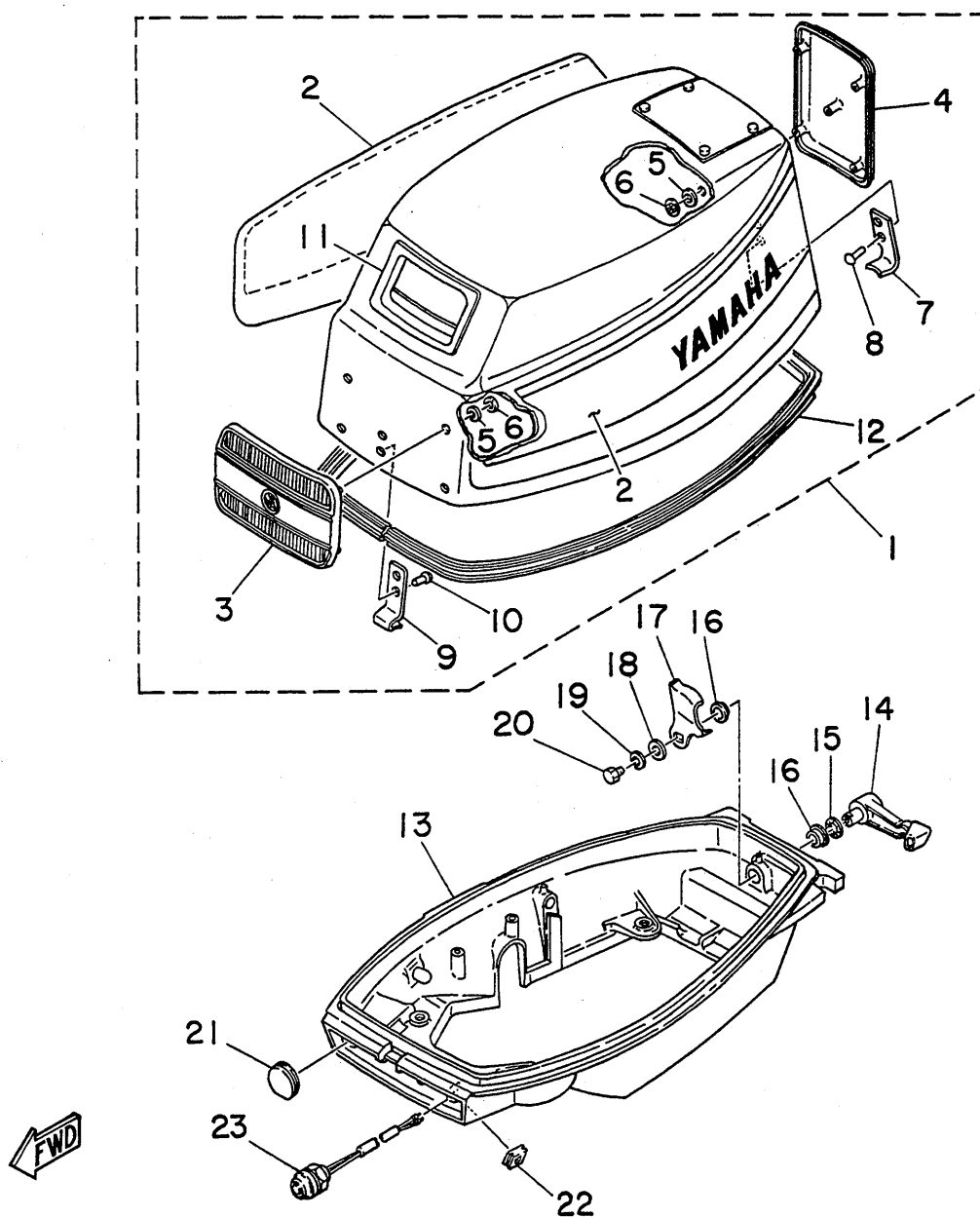
28A

REPAIR KIT



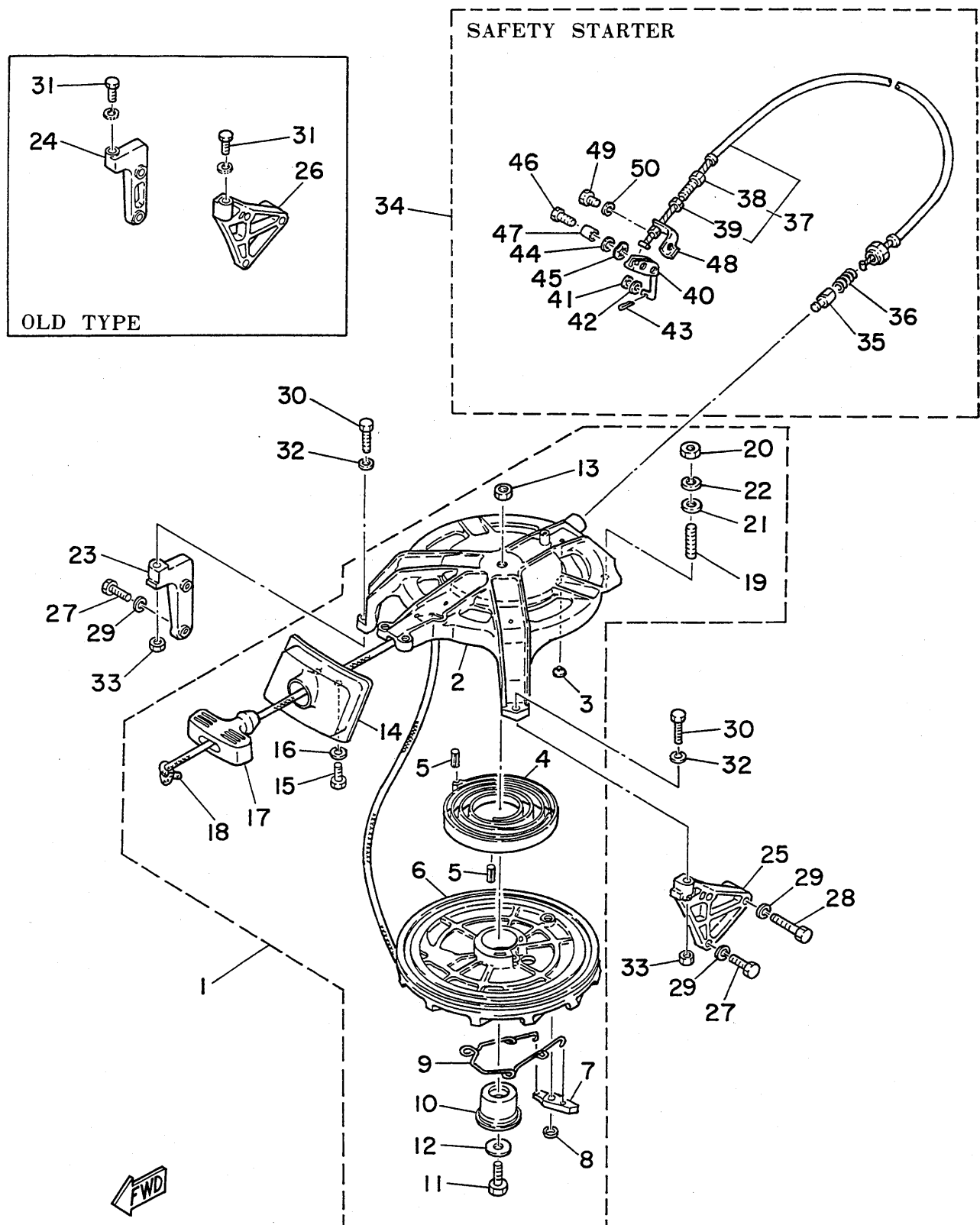
POWER HEAD GASKET KIT	664-W0001-10
LOWER UNIT GASKET KIT	664-W0001-31
REED SET	648-W0004-00
EXTENSION KIT (Long)	664-W0072-02
WATER PUMP REPAIR KIT	664-W0078-01
CHROME PUMP KIT	664-W0078-0A
SAFETY STARTER KIT	656-W0079-00
CRANK CYLINDER ASS'Y	664-W0090-01
CARBURETOR REPAIR SET	656-W0093-00
PISTON ASS'Y (Standard)	664-11630-00
PISTON ASS'Y (Over Size 67.25mm)	664-11630-10
PISTON ASS'Y (Over Size 67.50mm)	664-11630-20
LOWER UNIT ASS'Y (Short)	664-45300-00-F6
LOWER UNIT ASS'Y (Long)	664-45300-10-F6

Fig. 1 COWLING-1978



Ref.No.	Parts No.	Description	Q'ty	Ref.No.	Parts No.	Description	Q'ty
1	664-42610-63-F6	TOP COWLING ASS'Y	1	13	664-42711-00-F6	COWLING, bottom 1	1
2	99999-00921	. GRAPHIC, side set	1s	14	664-42815-00-F6	LEVER, clamp 1	1
3	648-42686-00	. EMBLEM, front	1	15	90206-12052	WASHER, wave (12.5 ϕ -19 ϕ -0.5mm)	1
4	664-42687-60	. EMBLEM, rear	1	16	90386-12069	BUSHING	2
5	650-42693-00	. DAMPER, emblem	10	17	656-42816-00	LEVER, clamp 2	1
6	90183-05003	. NUT, spring	10	18	90201-06068	WASHER (6.5 ϕ -20 ϕ -2.0mm)	1
7	656-42647-00	. HOLDER, clamp band	1	19	92990-06100	WASHER	1
8	90266-04012	. RIVET 1	2	20	97313-06010	BOLT	1
9	648-42651-00	. HOOK 1	1	21	664-42724-00	GROMMET 1	1
10	90266-04M00	. RIVET 2	2	22	90480-12156	GROMMET	1
11	648-15761-00	. SEAL, rubber	1	23	664-82550-00	STOP SWITCH ASS'Y	1
12	648-42615-00	. SEAL	1				

Fig. 2 STARTER-1978



STARTER -1978

676-15799-00 1711/70 追加

(656/61
112
163
164

Ref.No.	Parts No.	Description	Q'ty	Ref.No.	Parts No.	Description	Q'ty
▶ 1 *	656-15710-03-F6	STARTER ASS'Y	1	27	97313-06025	BOLT	4
◀ *	656-15710-02-F6	STARTER ASS'Y	1	28	97313-06040	BOLT	1
▶ 2 *	656-15711-03-94	. CASE, starter	1	29	92903-06100	WASHER	5
◀ *	656-15711-02-94	. CASE, starter	1	▷ 30 *	97313-06030	BOLT	2
⬆	656-15711-02-F6	. CASE, starter	1	◀ 31	97323-06020	BOLT	2
3	648-15773-00	. STAY 3	6	32	92903-06100	WASHER	2
4	90510-08002	. SPRING, spiral	1	▷ 33 *	95303-06600	NUT	2
5	91690-40020	. PIN, spring	2	SAFETY STARTER			
6	656-15714-00-94	. DRUM, sheave <i>676-15714</i>	1	34	656-W0079-00	SAFETY STARTER KIT	1
7	648-15741-01	. PAWL, drive	1	35	656-15748-00	. PLUNGER, starter stop	1
8	93430-06005	. CIRCLIP (E-6φ)	1	36	90501-10227	. SPRING, compression	1
9	656-15705-00	. PAWL DRIVE SPRING ASS'Y	1	37	656-15770-00	. WIRE COMP., starter stop	1
10	648-15717-00	. SHAFT	1	38	90123-06049	. . BOLT, wire adjusting	1
11	97313-08025	. BOLT	1	39	95303-06600	. . NUT	2
12	90201-08309	. WASHER (8φ-23φ-3.0mm)	1	40	656-15749-00	. LINK COMP., starter stop	1
13	95303-08600	. NUT	1	41	92903-05600	. WASHER	1
14	648-15758-00-F6	. GUIDE, wire	1	42	90206-05005	. WASHER, wave(5.5φ-11φ-0.3mm)	1
15	97313-06015	. BOLT	2	43	91490-16010	. PIN, cotter	1
16	92903-06100	. WASHER	2	44	92903-06600	. WASHER	1
17	619-15755-01	. HANDLE, starter	1	45	90206-08010	. WASHER, wave (8.7φ-16φ-0.3mm)	1
18	+	. WIRE (2050mm)	1	46	97313-06020	. BOLT	1
19	90116-08M01	. BOLT, stud	1	47	90387-06568	. COLLAR (6φ-8φ-7.5mm)	1
20	95303-08600	. NUT	1	48	656-15774-00	. STAY 4	1
21	92903-08200	. WASHER	1	49	97313-06012	. BOLT	1
22	92903-08100	. WASHER	1	50	92903-06100	. WASHER	1
▷ 23 *	656-15771-00-94	STAY 1	1				
◀ 24	648-15771-00-94	STAY 1	1				
▷ 25 *	656-15772-00-94	STAY 2	1				
◀ 26	648-15772-00-94	STAY 2	1				

◀ { 28A S: 154805 and below
L: 453230 and below

28AE S: 270940 and below
L: 571825 and below

▶ { 28A S: 154806 and up
L: 453231 and up

28AE S: 270941 and up
L: 571826 and up

◀ { 28A S: 152830 and below
L: 452075 and below

28AE S: 270760 and below
L: 571340 and below

▷ { 28A S: 152831 and up
L: 452076 and up

28AE S: 270761 and up
L: 571341 and up

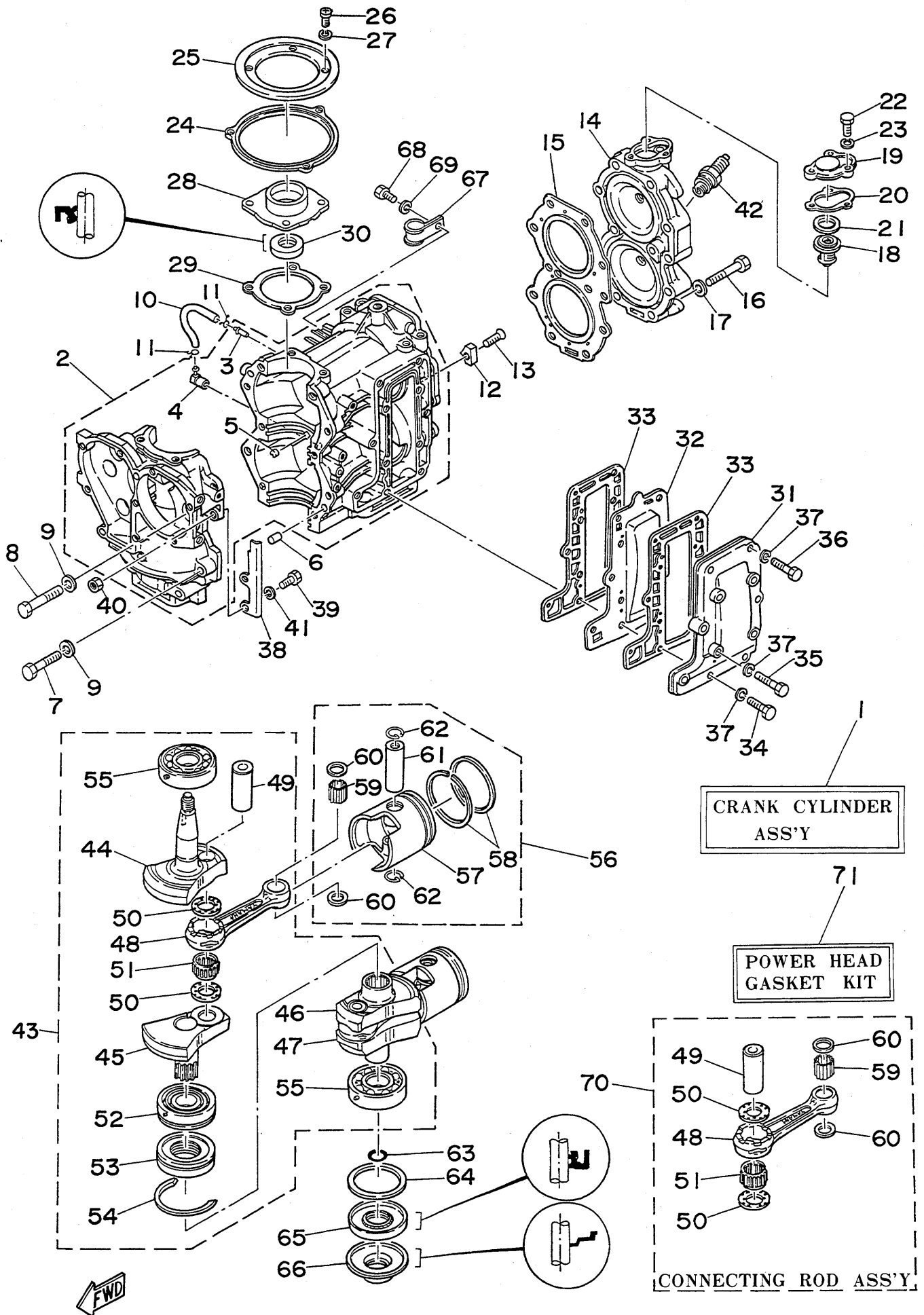
* New parts number

⬆ Superseded by new parts number

+ Cut from 50m roll, Parts No. 90890-44373, cutting length 2.05m.

* Not shown

Fig. 3 CRANKCASE, CYLINDER & PISTON - 1978



CRANKCASE, CYLINDER & PISTON -1978

Ref.No.	Parts No.	Description	Q'ty	Ref.No.	Parts No.	Description	Q'ty
1 *	664-W0090-01	CRANK CYLINDER ASS'Y (Ref. No. 2 to 66)	1	45	648-11422-01	. CRANK 2	1
▶ 2 *	664-15100-03-94	CRANKCASE ASS'Y	1	46	648-11432-01	. CRANK 3	1
◀ *	664-15100-02-94	CRANKCASE ASS'Y	1	47	664-11442-01	. CRANK 4	1
3	624-14485-00	. PIPE, joint	1	48	648-11651-01	. ROD, connecting 1	2
4	650-11370-00	. CHECK VALVE ASS'Y	1	49	648-11681-00	. PIN, crank 2	2
5	624-11379-00	. VALVE, check 1	1	50	90209-22071	. WASHER (22.2φ-37φ-1mm)	4
6	93606-12019	PIN, dowel B (6φ-12mm)	2	51	93310-522A4	. BEARING, con-rod big end	2
7	97313-08045	BOLT	2	52	93390-00009	. BEARING, roller	1
8	97313-08055	BOLT	8	53	656-11515-00	. SEAL, labyrinth	1
9	648-11175-00	WASHER, holding	10	54	93440-62057	. CIRCLIP (62φ special)	1
10	90445-07260	HOSE (2.5φ-7φ-270mm)	1	55	93306-30510	. BEARING (B6305)	2
11	90467-06016	CLIP	2	56 *	664-11630-00	PISTON ASS'Y (Standard)	2
12	664-11325-00	ANODE	1	※ *	664-11630-10	PISTON ASS'Y (Over Size 67.25mm)	2
13	92280-06020	SCREW, flathead	1	※ *	664-11630-20	PISTON ASS'Y (Over Size 67.50mm)	2
14	664-11111-00-94	HEAD, cylinder 1	1	57 *	664-11631-00-96	. PISTON (Standard 66.96mm)	} U.R. 2
■ 15	664-11181-00	GASKET, cylinder head	1	⌋	656-11631-60-96	. PISTON (Standard 66.96mm)	
16	97313-08050	BOLT	11	×	664-11631-00-97	. PISTON (Standard 66.97mm)	
17	648-11175-00	WASHER, holding	11	⌋	656-11631-60-97	. PISTON (Standard 66.97mm)	
18	656-12411-01	THERMOSTAT	1	×	664-11631-00-98	. PISTON (Standard 66.98mm)	} U.R. 2
19	655-12413-01-94	COVER, thermostat	1	⌋	656-11631-60-98	. PISTON (Standard 66.98mm)	
■ 20	655-12414-00	GASKET, thermostat	1	※ *	664-11635-00	. PISTON (Over Size 67.25mm)	2
21	90201-21567	WASHER (21.5φ-27.5φ-2mm)	1	⌋	656-11635-60	. PISTON (Over Size 67.25mm)	2
22	97313-06020	BOLT	3	×	664-11636-00	. PISTON (Over Size 67.50mm)	2
23	92903-06100	WASHER	3	⌋	656-11636-60	. PISTON (Over Size 67.50mm)	2
24	664-41611-00-94	RETAINER, magneto base 1	1	58 *	656-11610-02	. PISTON RING SET (Standard)	2s
25	664-41612-01	RETAINER, magneto base 2	1	⌋	656-11610-01	. PISTON RING SET (Standard)	2s
26	92503-06020	SCREW, panhead	4	×	656-11610-12	. PISTON RING SET (Over Size 67.25mm)	2s
27	92903-06100	WASHER	4	⌋	656-11610-11	. PISTON RING SET (Over Size 67.25mm)	2s
28	664-15359-01-94	HOUSING, oil seal	1	※ *	656-11610-22	. PISTON RING SET (Over Size 67.50mm)	2s
■ 29	664-15369-00	GASKET, oil seal housing	1	⌋	656-11610-21	. PISTON RING SET (Over Size 67.50mm)	2s
30	93102-23096	OIL SEAL (SD-23φ-38φ-7mm)	1	59	93602-20M02	. BEARING, con-rod small end	62
31	664-41113-00-94	OUTER COVER, exhaust	1	60	90201-18522	. WASHER (18.2φ-21.5φ-1.2mm)	4
32	664-41111-00	INNER COVER, exhaust	1	61	648-11633-00	. PIN, piston	2
■ 33	664-41114-00	GASKET, exhaust cover	2	62	93450-20026	. CLIP	4
34	90101-06M10	BOLT	2	■ 63	93210-16275	O-RING (2.4φ-15.8φ)	1
35	90101-06M12	BOLT	5	64	90201-50306	WASHER (50φ-66φ-1.5mm)	1
36	90101-06M13	BOLT	4	65	93102-25114	OIL SEAL (SD-25φ-62φ-8mm)	1
37	92903-06100	WASHER	11	66	93104-16050	OIL SEAL (SO-16φ-62φ-12mm)	1
38	648-41616-00	STOPPER, magneto base 2	1	67	90461-06015	CLAMP	1
39	97313-06020	BOLT	2	68	97313-06012	BOLT	1
40	95303-06600	NUT	2	69	92903-06100	WASHER	1
41	92903-06100	WASHER	2	70	648-11650-00	CONNECTING ROD ASS'Y	2
42	94701-00040	PLUG, spark (B-7HS) NGK	2	■ 71	664-W0001-10	POWER HEAD GASKET KIT	1
43	664-11400-01	CRANK ASS'Y	1				
44	648-11412-01	. CRANK 1	1				

◀ { 28A S: 154805 and below
L: 453230 and below

28AE S: 270940 and below
L: 571825 and below

▶ { 28A S: 154806 and up
L: 453231 and up

28AE S: 270941 and up
L: 571826 and up

- * New parts number
- ※ Not shown
- ⌋ Superseded by new parts number
- Contents of power head gasket kit

Fig. 4 INTAKE -1978



INTAKE -1978

Ref.No.	Parts No.	Description	Q'ty	Ref.No.	Parts No.	Description	Q'ty
1	664-14417-00	COVER	1	36	648-14386-00	. PIN, float	1
2	90387-06461	COLLAR (6.5 ϕ -10.5 ϕ -18mm)	2	37	664-14381-00	. BODY, float chamber	1
3	97803-05030	SCREW, panhead	2	■♣ 38	648-14384-01	. GASKET, float chamber	1
4	92903-05300	WASHER	2	♣ 39	98503-04012	. SCREW, panhead	4
5	648-13641-01-94	MANIFOLD, intake	1	♣ 40	92990-04100	. WASHER, spring	4
6	90116-06138	BOLT, stud	1	41	646-14394-00	. VALVE, drain	1
7	90116-06122	BOLT, stud	2	♣ 42	646-14397-00	. O-RING	1
■ 8	648-13621-00	PACKING, valve seat	1	43	646-14223-01	. SPRING, drain valve	1
■ 9	648-13645-00	GASKET, intake manifold 1	1	44	648-14321-00	. SCREW, throttle	1
10	97313-06025	BOLT	2	♣ 45	647-14323-00	. SCREW, air adjusting	1
11	97313-06035	BOLT	6	46	648-14334-00	. SPRING, air adjusting	2
12	92903-06100	WASHER	8	47	648-41216-01	. SHEAVE SHAFT, accel. link	1
13	95303-06600	NUT	1	48	93430-04031	. CIRCLIP (E-4 ϕ)	1
14	92903-06200	WASHER	1	49	664-41231-00	. COLLAR, guide pin	1
15 *	656-13610-00	REED VALVE ASS'Y	1	50	92990-05200	. WASHER	1
♣ 16	648-13610-00	REED VALVE ASS'Y	1	♣ 51	90386-05002	. BUSHING	2
16 *	656-W0004-00	. REED SET	1s	52	648-41210-01	. ACCEL. ARM ASS'Y	1
■♣ 17	648-14198-00	GASKET	1	53	95303-05700	. NUT	1
18	95303-06600	NUT	2	54	92990-05100	. WASHER, spring	1
19	92903-06600	WASHER	2	55	664-14327-00	. SCREW	1
20	664-41271-00	KNOB, choke 1	1	56	656-41241-00	. ROD 1	1
21	90480-12154	GROMMET 1	1	♣ 57	661-41262-02	. JOINT, choke lever	1
22	664-41252-00	LEVER, choke 1	1	58	664-14315-00	. LEVER THROTTLE ASS'Y	1
23	91690-40016	PIN, spring	2	59	648-14331-00	. SPRING, throttle valve	1
24	661-41262-02	JOINT, choke lever	2	60	664-14201-01	. CHOKE LEVER COMP.	1
25	664-41256-00	ROD, choke link 1	1	61	664-14357-00	. WASHER, plain	1
26	90240-05044	PIN, with hole	1	62	664-14377-00	. STOPPER	1
27	90201-05560	WASHER (5.5 ϕ -13 ϕ -0.8mm)	1	63	664-14218-00	. SPRING, choke lever	1
28	90468-10005	CLIP	1	64	90446-05005	HOSE (3 ϕ -5 ϕ -300mm)	1
29	90206-05005	WASHER, wave (5.5 ϕ -11 ϕ -0.3mm)	1	65	90445-09105	HOSE (5 ϕ -9 ϕ -300mm)	1
30	664-14301-02	CARBURETOR ASS'Y	1	66	90467-08004	CLIP	1
31	664-14342-30	. JET, pilot (#60)	1	67	90467-05001	CLIP	1
♣ 32	648-14390-14	. VALVE SEAT ASS'Y	1	♣ 68 *	656-W0093-00	CARBURETOR REPAIR SET	1s
33	648-14341-00	. NOZZLE, main (3.0 ϕ)	1				
34	648-14343-70	. JET, main (#140)	1				
♣ 35	648-14385-00	. FLOAT	1				

* New parts number

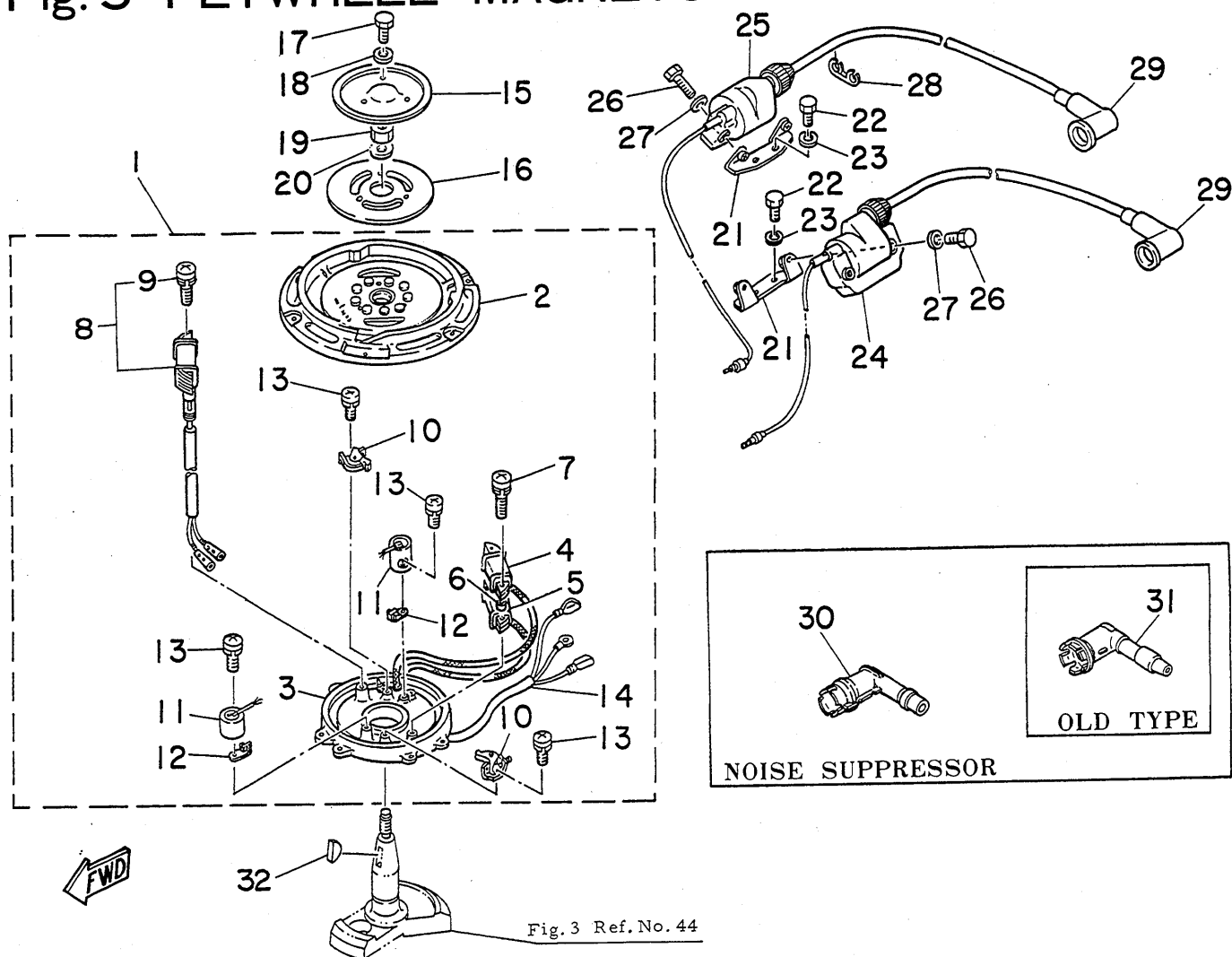
~~Not shown~~

♣ Superseded by new parts number

■ Contents of power head gasket kit (Parts No. 664-W0001-10)

♣ Contents of carburetor repair set

Fig. 5 FLYWHEEL MAGNETO -1978



Ref.No.	Parts No.	Description	Q'ty	Ref.No.	Parts No.	Description	Q'ty
1	656-81300-61	FLYWHEEL MAGNETO ASS'Y	1	19	90170-12066	NUT	1
2	648-81350-10	. ROTOR ASS'Y	1	20	90201-12472	WASHER (12.2φ-26φ-3.2mm)	1
3	648-81309-12	. BASE, magneto	1	21	664-82316-01	BRACKET, ignition coil	2
4	647-81311-10	. COIL, ignition 1	1	22	97313-06014	BOLT	4
5	647-81312-10	. COIL, ignition 2	1	23	92903-06100	WASHER	4
6	647-81318-10	. TUBE	2	24 *	664-82310-12	IGNITION COIL ASS'Y 1	1
7	647-81323-10	. SCREW (M5-35mm)	2	⌆	664-82310-11	IGNITION COIL ASS'Y 1	1
8 *	677-81303-60	. LIGHTING COIL ASS'Y	1	25 *	664-82320-12	IGNITION COIL ASS'Y 2	1
⌆	647-81313-41	. COIL, lighting	1	⌆	664-82320-11	IGNITION COIL ASS'Y 2	1
9	647-81324-10	. . SCREW (M5-30mm)	2	26	97313-06025	BOLT	4
10	650-81321-10	. CONTACT BREAKER ASS'Y	2	27	92903-06600	WASHER	4
11	647-81325-11	. CONDENSER	2	28	90464-07015	CLAMP	1
12	207-81331-10	. LUBRICATOR	2	29	663-82370-01	PLUG CAP ASS'Y	2
13	164-81246-21	. SCREW	4	▶ 30 *	677-82370-00	PLUG CAP ASS'Y (Noise Suppressor)	2
14	648-81315-10	. LEAD WIRE ASS'Y	1	◀ 31	650-82370-00	PLUG CAP ASS'Y (Noise Suppressor)	2
15	648-81362-01	COVER, hole	1				
16	648-81365-00	PACKING	1	32	90280-05013	KEY, woodruff	1
17	97313-06012	BOLT	3				
18	92903-06200	WASHER	3				

◀ { 28A S: 154805 and below
 L: 453230 and below

28AE S: 270940 and below
 L: 571825 and below

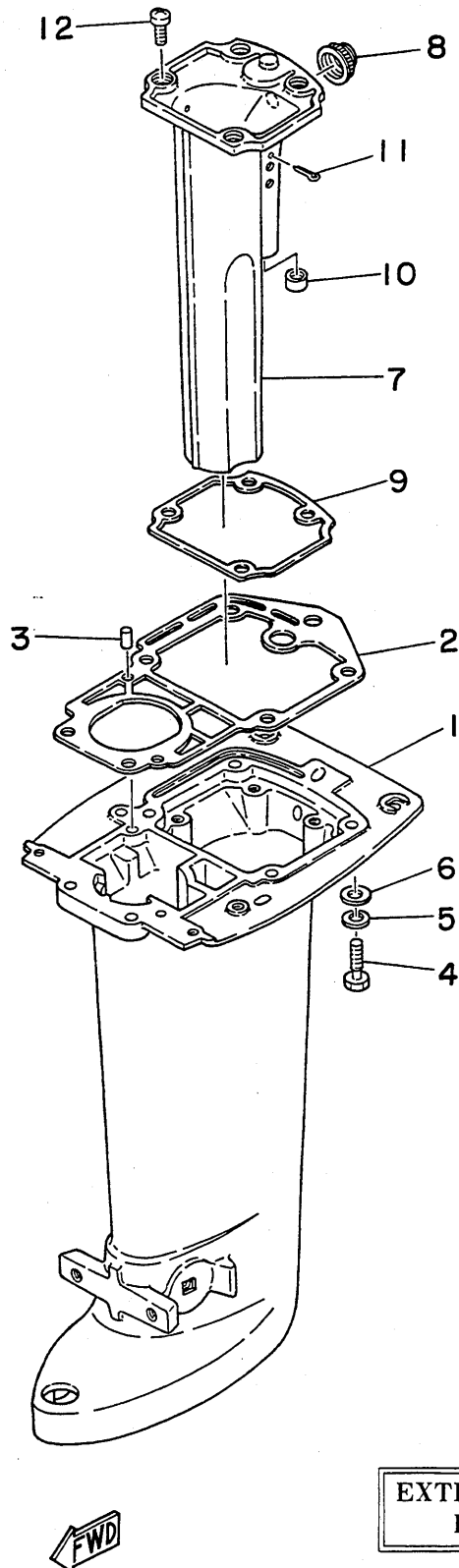
▶ { 28A S: 154806 and up
 L: 453231 and up

28AE S: 270941 and up
 L: 571826 and up

* New parts number

⌆ Superseded by new parts number

Fig. 6 UPPER CASING -1978



Ref.No.	Parts No.	Description	Q'ty
1	664-45101-00-F6	UPPER CASING COMP.	1
■ 2	664-45113-01	GASKET, upper casing	1
3	93606-12019	PIN, dowel B (6φ-12mm)	2
4	90101-08M23	BOLT	6
5	92990-08100	WASHER	6
6	92990-08600	WASHER	6
7	664-41131-01-94	MANIFOLD, exhaust 1	1
8	664-41133-00	GASKET, exhaust manifold 1	1
▲ 9	664-41134-00	GASKET, exhaust manifold 2	1
10	664-41135-00	GASKET, exhaust manifold 3	1
11	91490-30025	PIN, cotter	1
12	97890-06015	SCREW, panhead	4
LONG			
● 13 *	664-45211-12-F6	EXTENSION (Long 127mm)	1
● ⇧	664-45211-11-F6	EXTENSION (Long 127mm)	1
● 14	93606-12019	PIN, dowel B (6φ-12mm)	2
● 15	90101-10M26	BOLT	4
● 16	92990-10100	WASHER	4
● 17	92990-10600	WASHER	4
● 18 *	664-W0072-02	EXTENSION KIT (Long)	1
● ⇧	664-W0072-01	EXTENSION KIT (Long)	1

* New parts number

⇧ Superseded by new parts number

■ Contents of power head gasket kit

(Parts No. 664-W0001-10)

▲ Contents of lower unit gasket kit

(Parts No. 664-W0001-31)

● Contents of extension kit

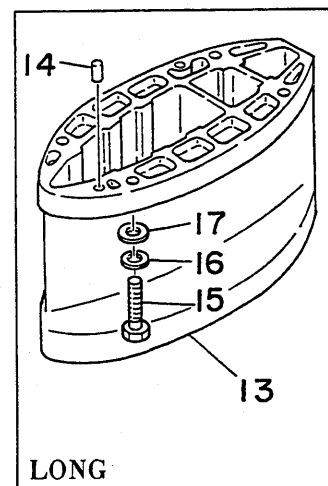
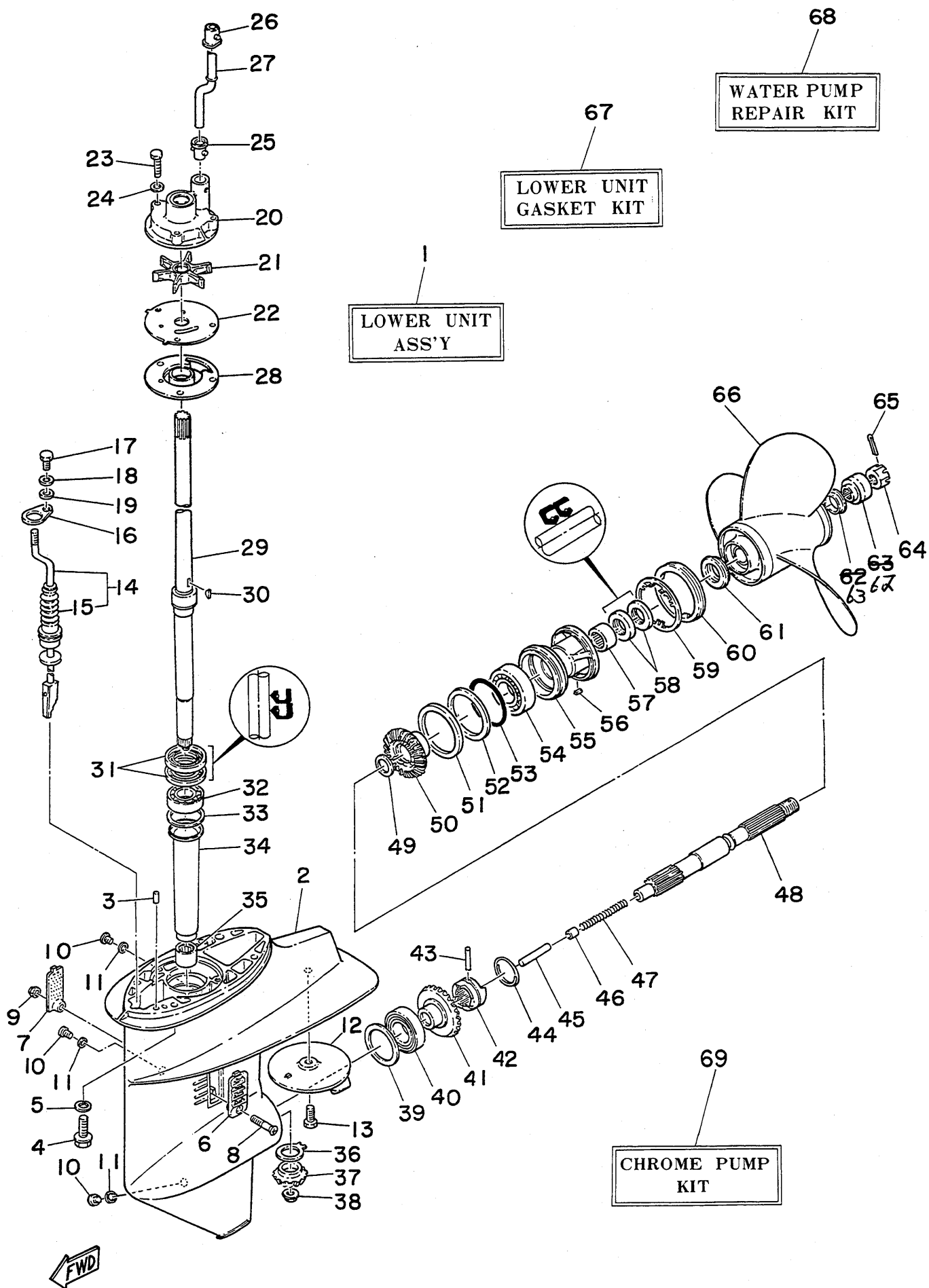


Fig. 7 LOWER & DRIVE -1978



LOWER & DRIVE -1978

Ref.No.	Parts No.	Description	Q'ty	Ref.No.	Parts No.	Description	Q'ty	
1	664-45300-00-F6	LOWER UNIT ASS'Y (Short) (Ref. No. 2,10,11,14 to 25, 28 to 60)	1s	37	664-45551-00	PINION (13T)	1	
※	664-45300-10-F6	LOWER UNIT ASS'Y (Long) (Ref. No. 2,10,11,14 to 25, 28 to 60)	1s	38	90179-08167	NUT	1	
2	664-45311-01-F6	CASING, lower	1	39	664-45567-00-05	SHIM 1 (42φ-51.5φ-0.05mm)	} U.R.	
3	93606-12019	PIN, dowel B (6φ-12mm)	2		664-45567-00-08	SHIM 1 (42φ-51.5φ-0.08mm)		
4	90105-10059	BOLT	4		664-45567-00-12	SHIM 1 (42φ-51.5φ-0.12mm)		
5	90204-10006	WASHER	4		664-45567-00-30	SHIM 1 (42φ-51.5φ-0.30mm)		
6	664-45214-00	COVER, water inlet 1	1		664-45567-00-50	SHIM 1 (42φ-51.5φ-0.50mm)		
7	664-45215-00	COVER, water inlet 2	1	40	93332-00005	BEARING, taper roller	1	
8	98180-05025	SCREW, ovalhead	1	41	664-45560-00	GEAR 1 ASS'Y (24T)	1	
9	90185-05002	NUT, self-locking	1	42	664-45631-00	CLUTCH, dog	1	
10	90340-08014	PLUG, straight screw	3	43	90250-05010	PIN, straight	1	
▲	90430-08020	GASKET	3	44	648-45633-00	RING, cross pin	1	
12	664-45371-01	TAB, trim	1	45	648-45635-00	PLUNGER, shift	1	
13	90105-08M02	BOLT	1	46	648-45634-00	SLIDE, shift	1	
14	664-44150-01	SHIFT CAM ASS'Y (Short 311mm)	1	47	90501-10065	SPRING	1	
● ※	664-44150-11	SHIFT CAM ASS'Y (Long 438mm)	1	48	664-45611-00	SHAFT, propeller	1	
●	15	664-44147-00	1	49	90201-20540	WASHER, plate (20φ-24.5φ-1.5mm)	1	
16	664-45321-00	PLATE	1	50	664-45571-00	GEAR 2 (24T)	1	
17	97370-06010	BOLT	1	51	664-45577-00-05	SHIM 2 (64φ-67.4φ-0.05mm)	} U.R.	
18	92990-06600	WASHER	1		664-45577-00-08	SHIM 2 (64φ-67.4φ-0.08mm)		
19	92903-06200	WASHER	1		664-45577-00-12	SHIM 2 (64φ-67.4φ-0.12mm)		
★	20	664-44301-00	1		664-45577-00-30	SHIM 2 (64φ-67.4φ-0.30mm)		
☆ ※	664-44301-40	WATER PUMP HOUSING COMP.	1		664-45577-00-50	SHIM 2 (64φ-67.4φ-0.50mm)		
☆☆	21	664-44352-01	1	52	664-45576-00	WASHER, thrust 2 (49φ-67φ-4mm)	1	
★	22	664-44323-00	1	▲	53	93210-62274	O-RING (2.8φ-62.0φ)	1
☆ ※	664-44323-40	OUTER PLATE, cartridge	1	54	93306-00606	BEARING (B6006)	1	
☆☆	23	90101-06M11	3	55	664-45331-00-94	HOUSING, bearing 1	1	
24	92990-06600	WASHER	3	56	90282-04010	KEY, straight	1	
☆☆	25	626-44365-01	1	57	93315-22004	BEARING, needle	1	
▲	26	664-44366-01	1	58	93101-20068	OIL SEAL (S-20φ-34φ-6mm)	2	
27	664-44361-00	TUBE, water 1 (Short 113mm)	1	59	90214-45012	WASHER, claw	1	
● ※	664-44361-10	TUBE, water 1 (Long 240mm)	1	60	664-45384-00	NUT	1	
28	664-44325-02	PROTECTOR, oil seal	1	61	664-45987-00	SPACER 1	1	
29	664-45501-00	DRIVE SHAFT COMP. (Short 655.5mm)	1	62 *	664-45997-00	SPACER 2	1	
● ※	664-45501-10	DRIVE SHAFT COMP. (Long 782.5mm)	1	☆	664-45997-01-94	SPACER 2	1	
☆☆	30	664-44338-00	1	63	664-45998-00 CAP, thrust plate	1	1	
31	93101-26073	OIL SEAL (S-26φ-45φ-6mm)	2	64	90171-14013 2x70-14x200 NUT, castle	1	1	
32	93306-00401	BEARING (B6004)	1	65	91490-30022	PIN, cotter	1	
33	664-45587-00-05	SHIM 3 (36φ-41.5φ-0.05mm)	} U.R.	66	664-45911-01-36	PROPELLER ASS'Y 1 (2x9 $\frac{3}{8}$ "x10 $\frac{1}{2}$ "-F)	} U.R.	
	664-45587-00-08	SHIM 3 (36φ-41.5φ-0.08mm)			664-45941-01-36	PROPELLER ASS'Y 1 (3x9 $\frac{3}{8}$ "x9"-F)		
	664-45587-00-12	SHIM 3 (36φ-41.5φ-0.12mm)			664-45913-01-36	PROPELLER ASS'Y 2 (2x9 $\frac{3}{8}$ "x12"-F)		
	664-45587-00-30	SHIM 3 (36φ-41.5φ-0.30mm)			664-45943-01-36	PROPELLER ASS'Y 2 (3x9 $\frac{3}{8}$ "x8"-F)		
	664-45587-00-50	SHIM 3 (36φ-41.5φ-0.50mm)			664-45945-00-36	PROPELLER ASS'Y 3 (3x9 $\frac{3}{8}$ "x10 $\frac{1}{2}$ "-F)		
34	664-45536-00	SLEEVE, drive shaft	1		664-45947-00-36	PROPELLER ASS'Y 4 (3x9 $\frac{3}{8}$ "x12"-F)		
35	93315-01725	BEARING, needle	1		664-45949-00-36	PROPELLER ASS'Y 5 (3x9 $\frac{3}{8}$ "x13"-F)		
36	664-45552-00	BEARING, plain	1	▲	67	664-W0001-31	LOWER UNIT GASKET KIT	1
				▲ ☆	664-W0001-30	LOWER UNIT GASKET KIT	1	
				★	68	664-W0078-01	WATER PUMP REPAIR KIT	1
				★ ☆	664-W0078-00	WATER PUMP REPAIR KIT	1	
				☆	69	664-W0078-0A	CHROME PUMP KIT	1

* New parts number

※ Not shown

☆ Superseded by new parts number

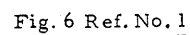
▲ Contents of lower unit gasket kit

★ Contents of water pump repair kit

☆☆ Contents of chrome pump kit

● Contents of extension kit (Parts No. 664-W0072-02)

Fig. 6 Ref. No. 1



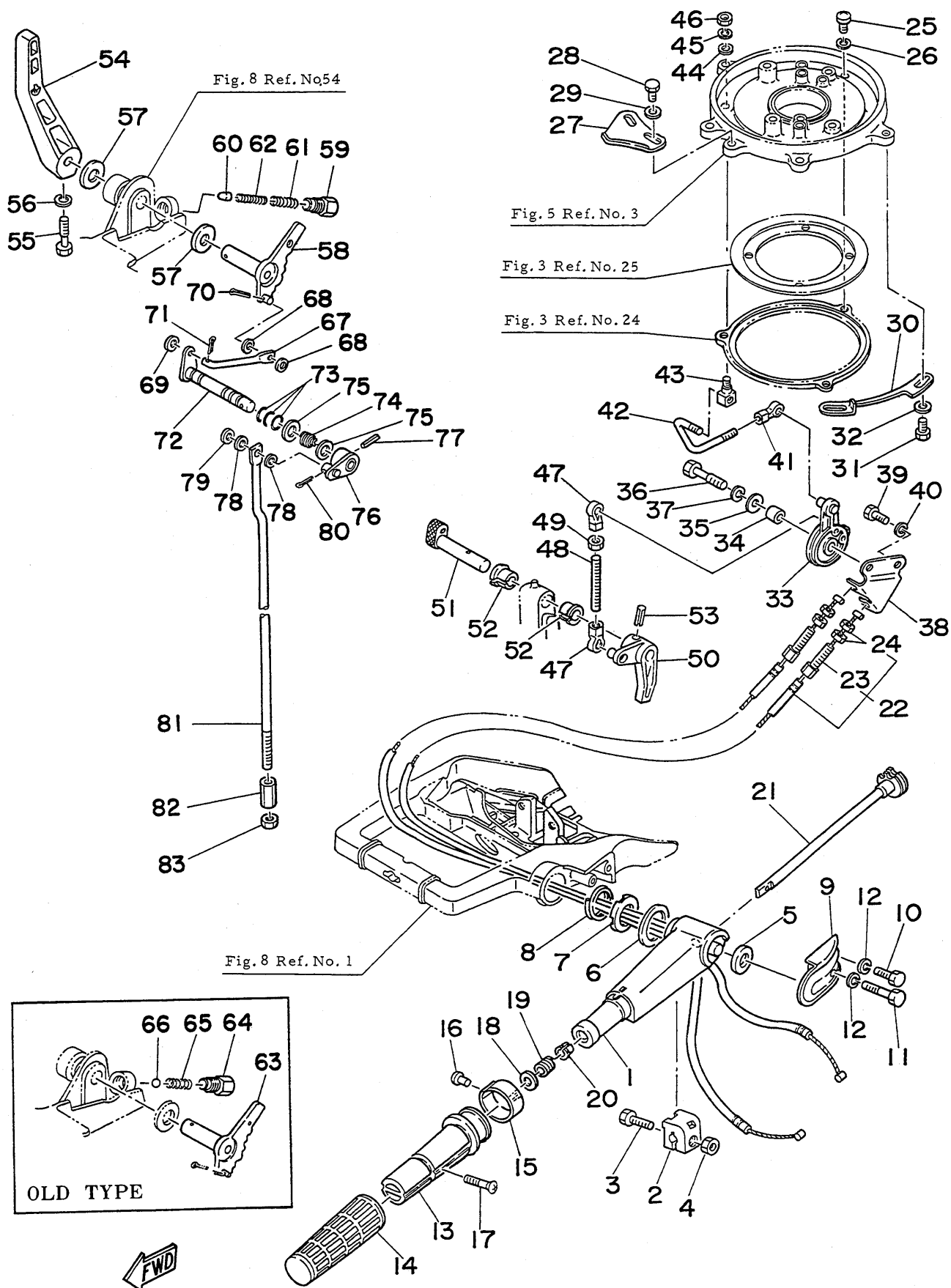
BRACKET -1978

Ref.No.	Parts No.	Description	Q'ty	Ref.No.	Parts No.	Description	Q'ty
1	656-42511-01-F6	BRACKET, steering	1	49	91490-16010	PIN, cotter	1
2	90480-29045	GROMMET	1	50	90506-30055	SPRING, tension	1
3	97370-06020	BOLT	4	51	656-43160-01	TILT ROD ASS'Y	1
4	92990-06100	WASHER	4	52	656-43165-01	. PLATE, tilt lock	1
5	656-43311-00-F6	BRACKET, swivel 1	1	53	91690-30008	. PIN, spring	1
6	90334-04002	PLUG, straight	1	54 *	648-44508-01-94	BRACKET COMP.	1
7	93700-06004	NIPPLE, grease	2	⌄	648-44508-01-F6	BRACKET COMP.	1
8	663-45119-00	CAP, grease nipple	2	55	648-42716-00	SEAL, rubber 1	1
9	648-42528-00	PIECE, friction	1	56	648-42718-00	SEAL, rubber 3	1
10	90149-08005	SCREW	1	57	90380-12012	BUSHING	2
11	90501-16099	SPRING, compression	1	58	90380-10M01	BUSHING	2
12 *	648-42521-01-94	SHAFT, steering pivot 1	1	59	93700-06004	NIPPLE, grease	1
⌄	648-42521-01-F6	SHAFT, steering pivot 1	1	60	663-45119-00	CAP, grease nipple	1
13	93608-12063	PIN, dowel B (8 ϕ -12mm)	2	61	90101-06M09	BOLT	4
14	90209-47016	WASHER	1	62	92990-06100	WASHER	4
15	90386-47092	BUSHING	1	63 *	648-44519-00-94	BRACKET 2	1
16	90241-03001	PIN, with head	1	⌄	648-44519-00-F6	BRACKET 2	1
17	90386-38022	BUSHING	1	64	93606-12019	PIN, dowel B (6 ϕ -12mm)	1
18	93210-37160	O-RING (2.5 ϕ -37 ϕ)	1	65	97370-06018	BOLT	1
19	90386-38090	BUSHING	1	66	92990-06100	WASHER	1
20	656-43111-01-F6	BRACKET, clamp 1	1	67	648-44517-00	MOUNT RUBBER, upper	4
21	656-43112-02-F6	BRACKET, clamp 2	1	68	95380-08700	NUT	4
22	616-43118-00-F6	HANDLE, transom clamp	2	69	95303-08700	NUT	4
23	90149-14030	SCREW	2	70	92990-08600	WASHER	8
24	648-43114-01	PAD, transom clamp	2	71	664-44516-00	MOUNT RUBBER, upper front	1
25	90243-04001	PIN	2	72	648-44592-00	GASKET, mount rubber 2	1
26	656-43191-00	SHAFT, stopper	1	73	90101-06M08	BOLT	2
27 *	648-43192-00	KNOB, stopper	1	74	92990-06100	WASHER	2
⌄	648-43192-00-F6	KNOB, stopper	1	75	648-44591-00	GASKET, mount rubber 1	1
28	91690-30016	PIN, spring	1	76	92990-10200	WASHER	1
29	656-43131-00	BOLT, clamp bracket 1	1	77	92880-10200	NUT	1
30	648-43136-00	PIECE, friction	2	78	648-44591-00	GASKET, mount rubber 1	2
31	90201-10130	WASHER (10.5 ϕ -20 ϕ -1.5~1.6mm)	1	79	664-44514-00-94	MOUNT RUBBER, upper side 1	2
32	90504-59006	SPRING, compression	1	80	664-44591-00	GASKET, mount rubber 1	2
33	95380-10600	NUT	1	81	92990-10200	WASHER	2
34	90101-08339	BOLT	1	82	92880-10200	NUT	2
35	95380-08600	NUT	1	83	92890-10700	NUT, crown	2
36	92990-08100	WASHER	1	84	664-44551-00-F6	HOUSING, lower mount rubber 1	1
37	90387-09074	COLLAR (9.2 ϕ -13.8 ϕ -103mm)	1	85	664-44552-00-F6	HOUSING, lower mount rubber 2	1
38	656-43631-00	LEVER, tilt 1	1	86	90101-08M18	BOLT	2
39	648-43633-00	COVER, tilt lever 1	1	87	90101-08M19	BOLT	2
40	90508-16018	SPRING, torsion	1	88	95380-08600	NUT	4
41	648-43616-00	ROD, tilt lock 1	1	89	92990-08100	WASHER	4
42	648-43642-00	LEVER, tilt 2	1	90	648-44557-03	MOUNT RUBBER, lower front	1
43	90249-06120	PIN	1	91	648-44593-00	GASKET, mount rubber 3	1
44	93430-05027	CIRCLIP (E-5 ϕ)	1	92	90101-08M21	BOLT	2
45	648-43617-00	ROD, tilt lock 2	1	93	90101-08M20	BOLT	2
46 *	648-43614-00	PLATE, tilt lock 1	1	94	92990-08100	WASHER	4
⌄	648-43614-00-F6	PLATE, tilt lock 1	1	95	664-44555-00	MOUNT RUBBER, lower side	2
47 *	648-43615-00	PLATE, tilt lock 2	1	96	648-44591-00	GASKET, mount rubber 1	2
⌄	648-43615-00-F6	PLATE, tilt lock 2	1	97	92880-10200	NUT	2
48	90240-05046	PIN, with hole	1				

* New parts number

⌄ Superseded by new parts number

Fig. 9 CONTROL - 1978



Ref.No.	Parts No.	Description	Q'ty	Ref.No.	Parts No.	Description	Q'ty
1	664-42111-01-F6	HANDLE, steering 1	1	43	648-41635-00	SHAFT, link connecting	1
2	656-42126-01	PIECE, friction	1	44	90201-05556	WASHER (5.2 ϕ -15 ϕ -2mm)	1
3	97370-06020	BOLT	1	45	92903-05100	WASHER	1
4	90185-06062	NUT	1	46	95303-05600	NUT	1
5	90560-14076	SPACER (14 ϕ -28 ϕ -3mm)	1	47 *	662-41237-01	JOINT, link 2	2
6	90202-34043	WASHER (34 ϕ -42 ϕ -1.5mm)	1	⌘	662-41237-00	JOINT, link 2	2
7	656-42155-00	SPACER, handle 1	1	48	90116-05220	BOLT, stud	1
8	90501-20001	SPRING, compression	1	49	95302-05600	NUT	1
9	656-42112-00-F6	HANDLE, steering 2	1	50	664-42154-01-94	LEVER, throttle control	1
10	97313-06020	BOLT	1	51 *	656-42153-00-94	SHAFT, throttle control	1
11	97313-06035	BOLT	1	⌘	656-42153-00-F6	SHAFT, throttle control	1
12	92990-06100	WASHER	2	52	90386-10009	BUSHING	2
13	664-42119-00	GRIP, steering handle	1	53	91690-40018	PIN, spring	1
14	647-42177-00	RUBBER, handle 1	1	54	656-44111-01-F6	HANDLE, gear shift	1
15	664-42137-00	INDICATOR, throttle	1	55	90101-06M09	BOLT	1
16	90269-02001	RIVET	1	56	92990-06100	WASHER	1
17	98180-05025	SCREW, ovalhead	1	57	90202-12031	WASHER (12.2 ϕ -24 ϕ -0.7mm)	2
18	92903-10600	WASHER	1	▶ 58 *	664-44113-00	CAM PLATE, handle	1
19	90501-23215	SPRING, compression	1	▶ 59 *	664-42715-00	BUSHING 2	1
20	90386-08032	BUSHING	1	▶ 60 *	664-44167-00	PLUNGER, shift cam	1
21	664-42138-00	LEVER, throttle	1	▶ 61 *	90501-14M07	SPRING, compression	1
22	664-26311-01	THROTTLE WIRE COMP.	2	▶ 62 *	90501-09M08	SPRING, compression	1
23	90123-06065	. BOLT, adjusting	2	▶ 63	656-44113-01	CAM PLATE, handle	1
24	90170-06183	. NUT	4	▶ 64	648-42715-00	BUSHING 2	1
25	97803-05010	SCREW, panhead	3	▶ 65	90501-12333	SPRING, compression	1
26	92903-05100	WASHER	3	▶ 66	93501-04011	BALL, steel (1/4")	1
27	664-41213-00	CAM, accel.	1	67	664-44142-00	JOINT	1
28	97313-05010	BOLT	2	68	90202-06007	WASHER (6 ϕ -13 ϕ -0.5mm)	2
29	92903-05600	WASHER	2	69	92990-05600	WASHER	1
30	664-41615-01	STOPPER, magneto base 1	1	70	91490-16010	PIN, cotter	1
31	97313-06012	BOLT	2	71	91490-12010	PIN, cotter	1
32	92903-06200	WASHER	2	72	664-44121-02	LEVER, shift rod 1	1
33	664-41631-00-94	LEVER, magneto control	1	73	93210-09M01	O-RING (0.9 ϕ -8.5 ϕ)	3
34	90387-06M02	COLLAR (6.3 ϕ -10 ϕ -10.5mm)	1	74	90508-14272	SPRING, torsion	1
35	90387-06298	COLLAR (6.5 ϕ -17 ϕ -1.6mm)	1	75	90202-10024	WASHER (10.2 ϕ -16 ϕ -0.7mm)	2
36	97313-06030	BOLT	1	76	664-44125-00	LEVER, shift rod 2	1
37	92903-06100	WASHER	1	77	91690-40016	PIN, spring	1
38	664-14497-00	STAY, throttle wire	1	78	90202-06007	WASHER (6 ϕ -13 ϕ -0.5mm)	2
39	97323-06014	BOLT	1	79	92990-05200	WASHER	1
40	92903-06100	WASHER	1	80	91490-20010	PIN, cotter	1
41 *	662-41237-01	JOINT, link 2	1	81	664-44143-00	ROD, shift 1	1
⌘	662-41237-00	JOINT, link 2	1	82	648-44146-00	CONNECTOR, shift rod 2	1
42	664-41636-00	ROD, magneto control	1	83	90170-07021	NUT	1

▶ { 28A S: 154805 and below
L: 453230 and below

28AE S: 270940 and below
L: 571825 and below

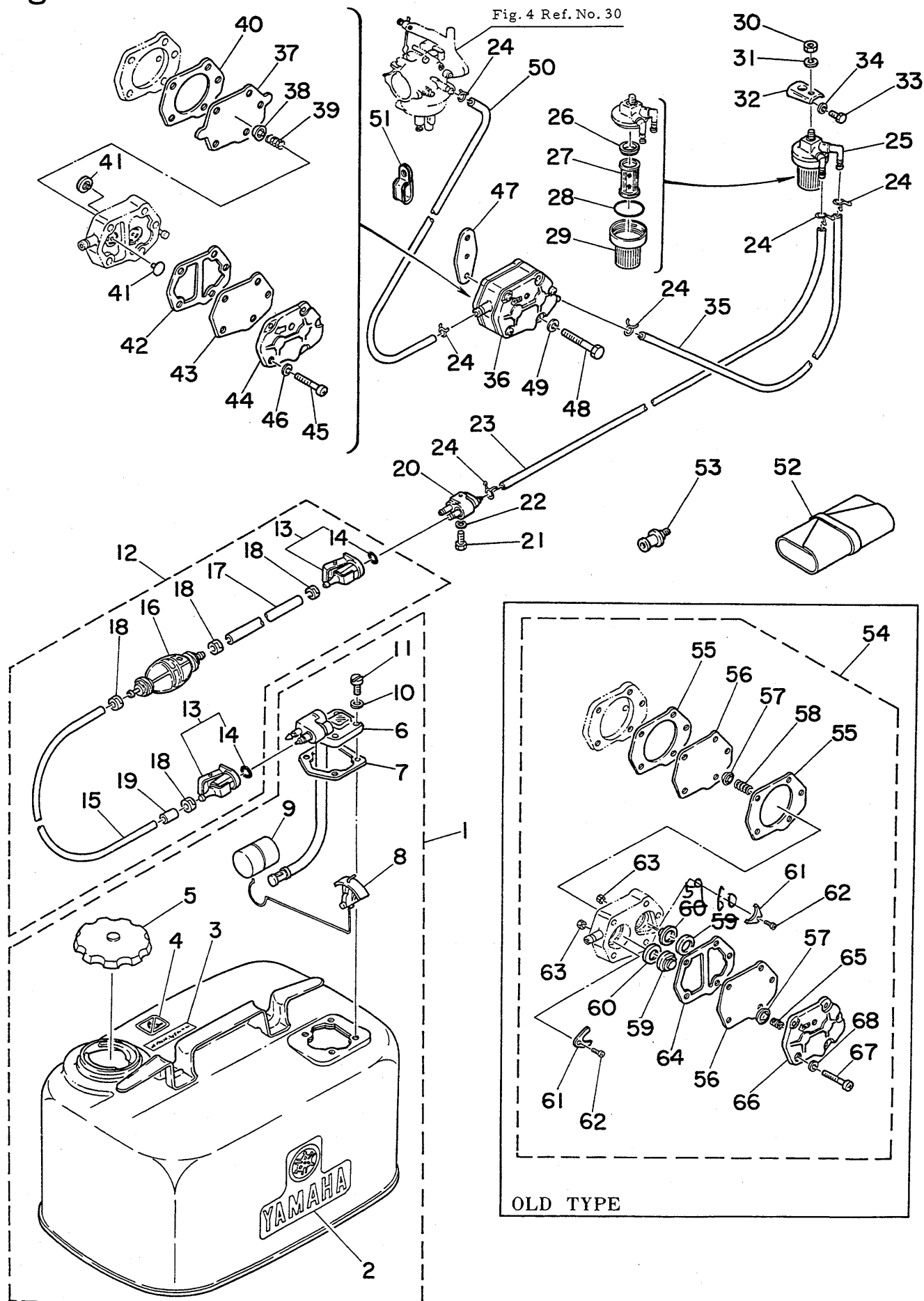
▶ { 28A S: 154806 and up
L: 453231 and up

28AE S: 270941 and up
L: 571826 and up

* New parts number

⌘ Superseded by new parts number

Fig. 10 FUEL SECTION - 1978



FUEL SECTION -1978

Ref.No.	Parts No.	Description	Q'ty	Ref.No.	Parts No.	Description	Q'ty
▷ 1 *	656-24202-04-24	FUEL TANK ASS'Y	1	34	92903-06100	WASHER	1
△ *	656-24202-03-24	FUEL TANK ASS'Y	1	35	664-24311-00	HOSE (5ø-9ø-110mm)	1
*	656-24202-90-24	FUEL TANK ASS'Y (For Brazil)	1	▷ 36 *	679-24410-00	FUEL PUMP ASS'Y	1
2	656-24244-01	. GRAPHIC, side	2	▷ 37	648-24411-00	. DIAPHRAGM, pump	1
3	656-24245-00	. GRAPHIC	1	▷ 38	648-24424-00	. PLATE, spring guide	1
▷ 4 *	656-24248-00	. GRAPHIC	1	39	648-24423-00	. SPRING, pump diaphragm	1
5	802-24610-00	. CAP ASS'Y	1	▷ 40	648-24434-00	. GASKET, body 1	1
6	656-24275-03	. FUEL METER COMP.	1	▷ 41 *	663-24421-00	. VALVE, check	2
7	663-24268-00	. GASKET, fuel meter housing	1	42	648-24435-02	. GASKET, body 2	1
8	656-24241-03	. INDICATOR	1	▷ 43 *	663-24411-00	. DIAPHRAGM, pump	1
9	663-24264-00	. FLOAT	1	44	648-24413-01	. COVER, pump	1
10	630-24329-00	. SEAL	4	45	98503-05028	. SCREW, panhead	3
11	98380-05018	. SCREW, cylinderhead	4	46	92990-05100	. WASHER	3
12 *	663-24310-61	FUEL PIPE ASS'Y	1	■ 47	650-24431-00	GASKET, fuel pump	1
⤴	663-24310-60	FUEL PIPE ASS'Y	1	48	97313-06040	BOLT	2
13 *	655-24305-01	. FUEL PIPE JOINT COMP. 2	2	49	92903-06100	WASHER	2
⤴	655-24305-00	. FUEL PIPE JOINT COMP. 2	2	50	648-24312-01	HOSE 2 (6ø-10ø-150mm)	1
14	93210-08287	. O-RING (3.0ø-8.0ø)	2	51	90461-06015	CLAMP	1
15 *	90445-12M04	. HOSE (6ø-11.5ø-1900mm)	1	52	670-28100-60	TOOL ASS'Y	1
⤴	90445-12207	. HOSE (6ø-11.5ø-2400mm)	1	53	626-28193-01-94	PLUG, water check 1 (Option)	1
16	650-24360-01	. PRIMARY PUMP ASS'Y	1	OLD TYPE			
17	90445-12155	. HOSE (6ø-11.5ø-1000mm)	1				
18	650-24351-00	. BAND, fuel pipe	4				
19	663-24397-00	. COLLAR	1				
20	655-24304-02	FUEL PIPE JOINT COMP. 1	1				
21	97313-06020	BOLT	1	54	663-24410-00	FUEL PUMP ASS'Y	1
22	92990-06100	WASHER	1	55	648-24434-00	. GASKET, body 1	2
23	90445-09251	HOSE (5ø-9ø-350mm)	1	56	648-24411-00	. DIAPHRAGM, pump	2
24	90467-08004	CLIP	6	57	648-24424-00	. PLATE, spring guide	2
25	655-24560-00	FILTER ASS'Y	1	58	648-24423-00	. SPRING, pump diaphragm	1
■ 26	655-24564-00	. PACKING	1	59	648-24421-00	. VALVE SUB-ASS'Y	2
27	655-24563-00	. ELEMENT, filter	1	60	648-24431-00	. GASKET	2
■ 28	93210-35339	. O-RING (2ø-34.5ø)	1	61	648-24422-01	. PLATE	2
29	655-24521-00	. CUP, filter	1	62	98503-03008	. SCREW, panhead	2
30	95303-08600	NUT	1	63	95313-03600	. NUT	2
31	92903-08100	WASHER	1	64	648-24435-02	. GASKET, body 2	1
32	648-24566-01	BRACKET, filter	1	65	648-24454-00	. SPRING	1
33	97313-06014	BOLT	1	66	648-24413-01	. COVER, pump	1
				67	98503-05028	. SCREW, panhead	3
				68	92990-05100	. WASHER	3

△ { 28A S: 151345 and below
L: 451125 and below

28AE S: 270310 and below
L: 570795 and below

▷ { 28A S: 151346 and up
L: 451126 and up

28AE S: 270311 and up
L: 570796 and up

* New parts number

* Not shown

⤴ Superseded by new parts number

■ Contents of power head gasket kit (Parts No. 664-W0001-10)

Fig. 11 ELECTRIC MOTOR (28AE MODEL) -1978

Ref.No.	Parts No.	Description	Q'ty
1	648-81800-41	ELECTRIC MOTOR ASS'Y	1
2	648-81860-41	. MAGNETIC SWITCH 1	1
3	648-81830-41	. GEAR CASE ASS'Y	1
4	648-81828-40	. BOLT 2	1
5	92903-06100	. WASHER	1
6	95301-06600	. NUT	1
7	648-81846-40	. BOLT 3	3
8	648-81829-40	. GROMMET	1
9	648-81809-40	. WASHER KIT	1s
10	648-81839-40	. LEVER, shift	1
11	648-81832-40	. GEAR ASS'Y (11T)	1
12	648-81850-40	. ARMATURE ASS'Y 1	1
13	648-81810-40	. STATOR ASS'Y	1
14	648-81862-40	. CAP	1
15	648-81811-40	. BRUSH 1 (+)	1
16	648-81812-40	. BRUSH 2 (-)	1
17	648-81813-40	. SPRING, brush	2
18	648-81814-40	. SPRING, friction piece	1
19	648-81827-40	. PIECE, friction	1
20	648-81820-40	. REAR COVER ASS'Y	1
21	648-81826-40	. BOLT	2
22	92903-05100	. WASHER	5
23	98503-04012	. SCREW, panhead	2
24	92901-04100	. WASHER	2
25	97313-06040	BOLT	1
26	648-81893-40	SHIM, gear adjusting	1
The following parts are not used when using the electric motor.			
2-25	656-15772-00-94	STAY 2	1
4-11	97313-06035	BOLT	1

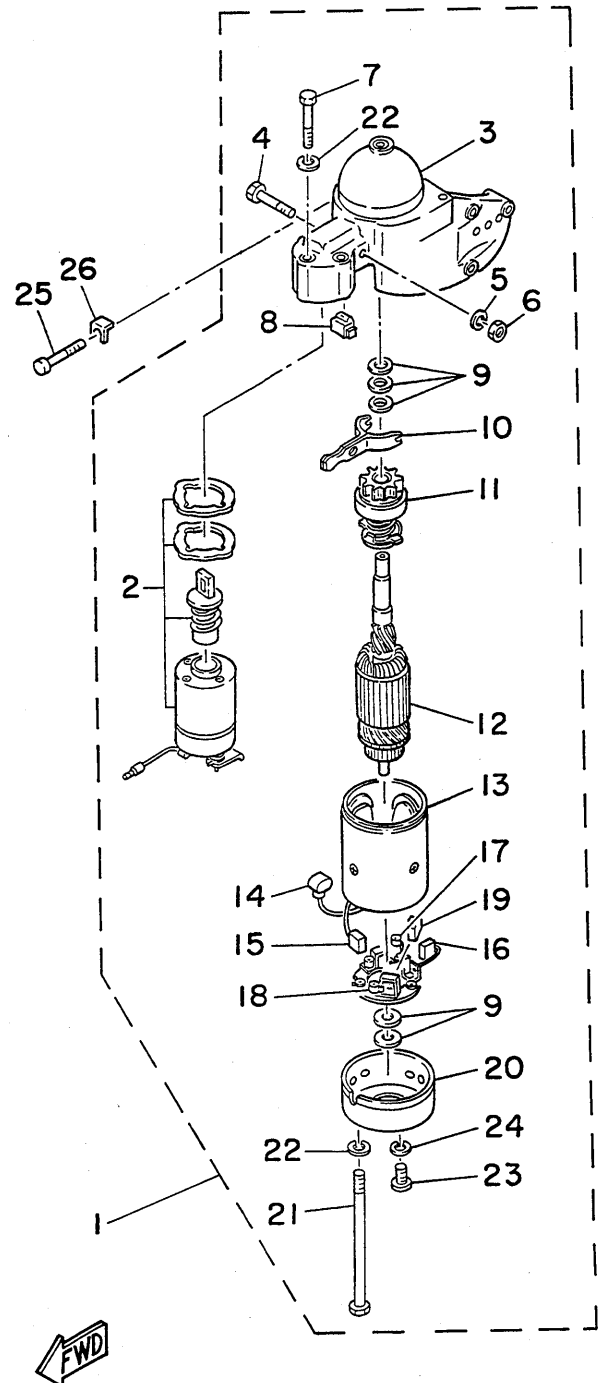
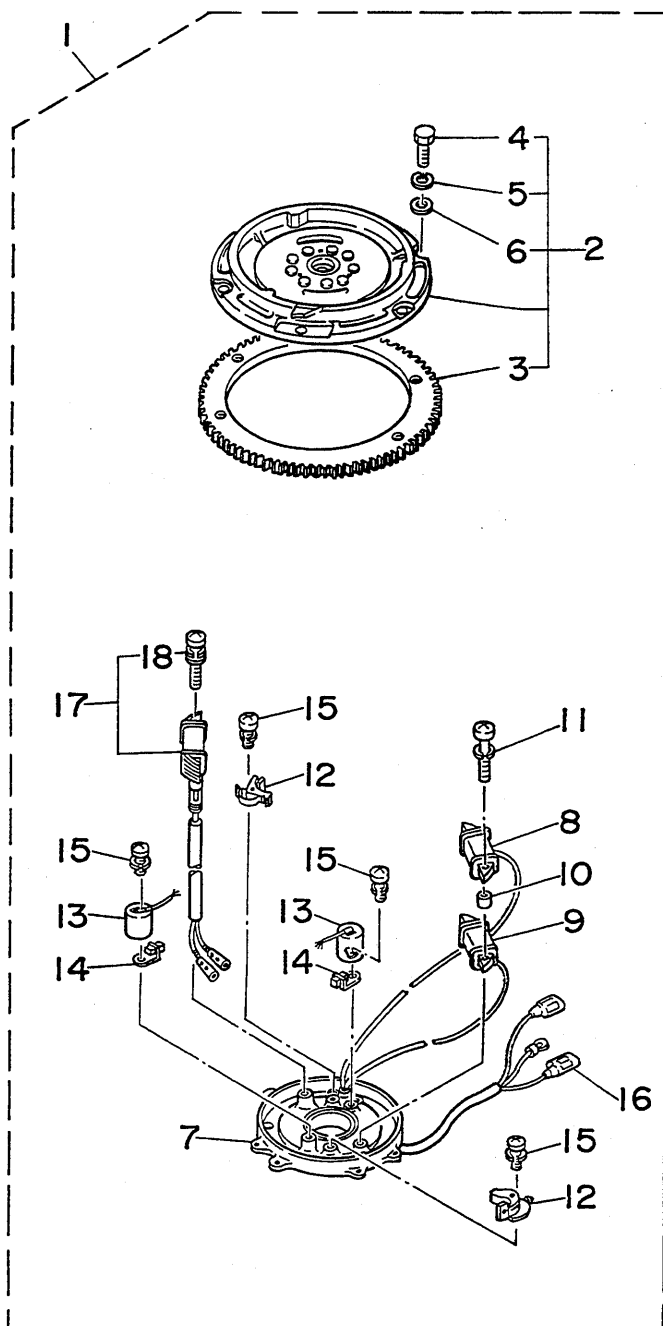


Fig. 12 FLYWHEEL MAGNETO (28AE MODEL) -1978



Ref.No.	Parts No.	Description	Q'ty
1	648-81300-63	FLYWHEEL MAGNETO ASS'Y	1
2	648-81350-11	. ROTOR ASS'Y	1
3	648-81891-00	. . GEAR, ring	1
4	97303-06018	. . BOLT	6
5	92903-06100	. . WASHER	6
6	92903-06200	. . WASHER	6
7	648-81309-12	. BASE, magneto	1
8	647-81311-10	. COIL, ignition 1	1
9	647-81312-10	. COIL, ignition 2	1
10	647-81318-10	. TUBE	2
11	647-81323-10	. SCREW (M5-35mm)	2
12	650-81321-10	. CONTACT BREAKER ASS'Y	2
13	647-81325-11	. CONDENSER	2
14	207-81331-10	. LUBRICATOR	2
15	164-81246-21	. SCREW	4
16	648-81315-10	. LEAD WIRE ASS'Y	1
17 *	677-81303-60	. LIGHTING COIL ASS'Y	1
⌄	647-81313-41	. COIL, lighting	1
18	647-81324-10	. . SCREW (M5-30mm)	2

The following parts are not used when using the flywheel magneto (with gear ring).

5- 1	656-81300-61	FLYWHEEL MAGNETO ASS'Y	1
------	--------------	------------------------	---

* New parts number

⌄ Superseded by new parts number

FWD

Fig. 13 SWITCH PANEL (28AE MODEL) -1978

Ref.No.	Parts No.	Description	Q'ty
1	648-82570-40	SWITCH PANEL ASS'Y	1
2	648-82571-40	. PANEL, switch	1
3	648-82508-40	. MAIN SWITCH ASS'Y	1
4	648-82584-40	. CAP, switch	1
5	648-82502-41	. SUB-SWITCH ASS'Y	1
6	648-82573-40	. SCREW, special 2	6
7	648-84301-40	. PILOT LAMP ASS'Y	1
8	648-83583-40	. . LENS, pilot	1
9	123-83516-21	. . BULB, pilot (12V-3W)	1
10	648-82594-40	. CLAMP, wire harness	1
11	648-82572-40	. SCREW, special 1	4
12	648-82580-40	. WIRE HARNESS ASS'Y 2	1
13	664-82590-00	WIRE HARNESS ASS'Y (2200mm)	1
14	656-82586-40	EXTENSION, wire harness (3000mm)	1
15	664-82105-00	LEAD WIRE ASS'Y (1800mm)	1
16	90464-18018	CLAMP	1
17	90161-06001	SCREW, flathead tapping	1
18	664-42724-40	GROMMET 1	1
19	664-82521-00	WIRE, lead 1 (470mm)	2
20	664-82531-00	WIRE, lead 2 (250mm)	1
21	90465-10071	CLAMP	1
22	90462-10018	CLAMP	2
23	97313-06014	BOLT	3
24	92903-06100	WASHER	3
25	90446-15105	HOSE (13φ-15φ-150mm)	1
26	90446-15104	HOSE (13φ-15φ-200mm)	1
27	90461-06015	CLAMP	1
28	90480-17165	GROMMET	1

The following parts are not used when using the switch panel.

1-21	664-42724-00	GROMMET 1	1
1-23	664-82550-00	STOP SWITCH ASS'Y	1

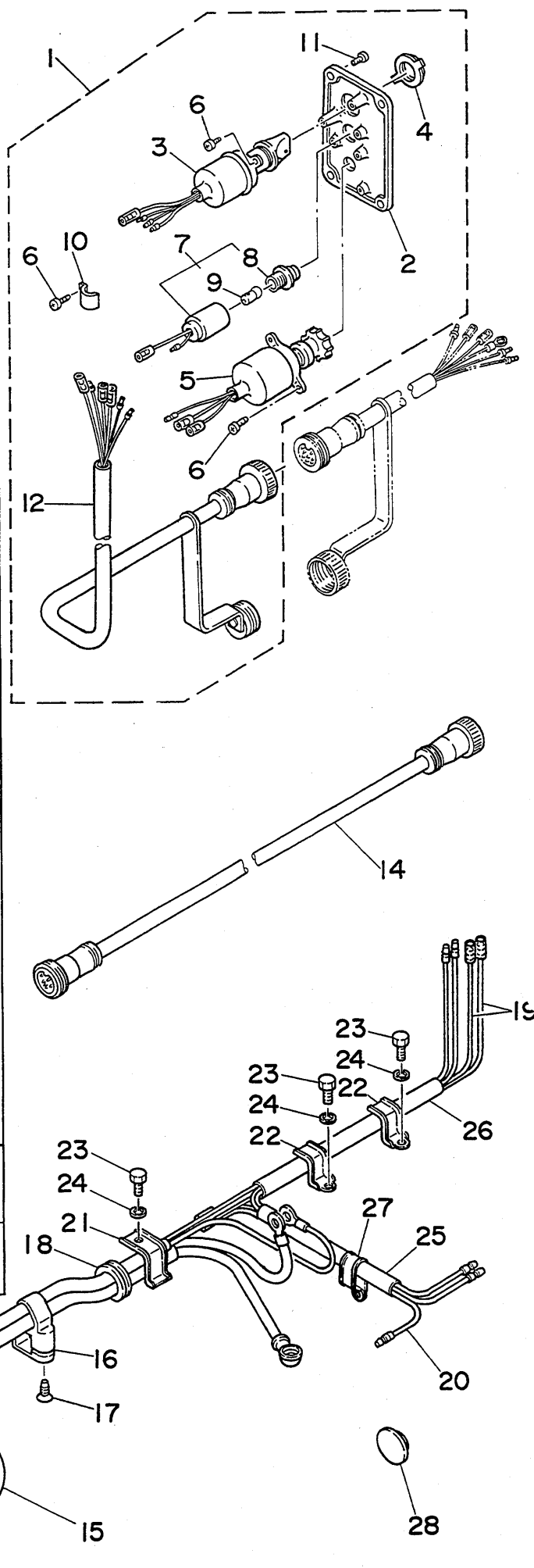
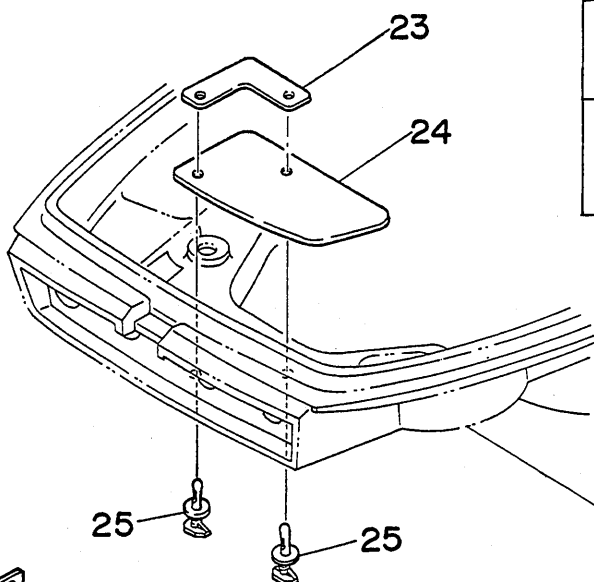
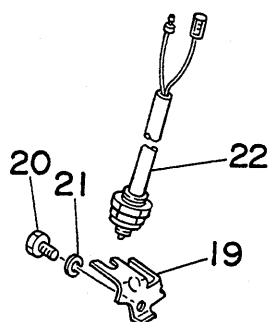
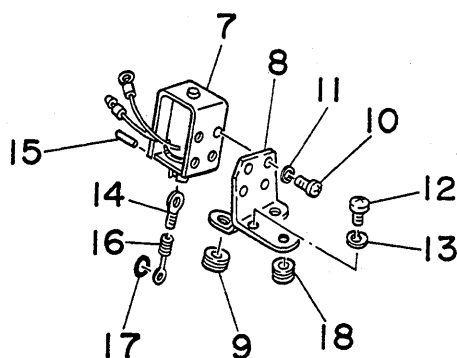
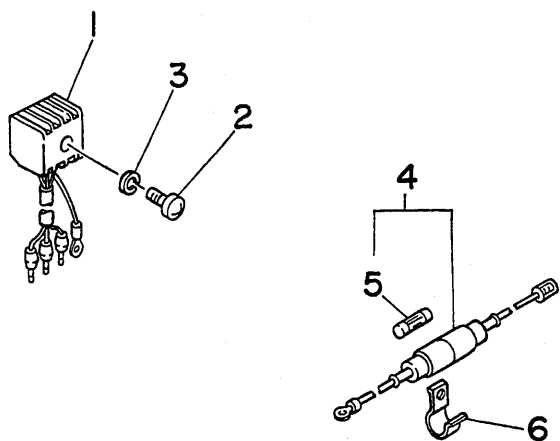


Fig. 14 ELECTRIC PARTS (28AE MODEL) -1978



Ref.No.	Parts No.	Description	Q'ty
1	664-81970-60	RECTIFIER ASS'Y	1
2	97803-05025	SCREW, panhead	1
3	92903-05100	WASHER	1
4	664-82150-01	FUSE HOLDER ASS'Y	1
5	663-82151-00	FUSE (12V-20A)	1
6	90462-10021	CLAMP	1
7	664-86111-00	SOLENOID ASS'Y	1
8	664-86112-00	STAY, solenoid	1
9	648-86115-40	GROMMET	1
10	98503-03006	SCREW, panhead	4
11	92903-03100	WASHER	4
12	97803-05012	SCREW, panhead	2
13	92903-05100	WASHER	2
14	664-86117-00	HOOK, wire pull	1
15	91690-30010	PIN, spring	1
16	664-86116-00	WIRE, pull	1
17	93210-03261	O-RING (1.2φ-2.8φ)	1
18	90480-10155	GROMMET	1
19	656-15774-41	STAY 4	1
20	97313-06012	BOLT	1
21	92903-06100	WASHER	1
22	656-82540-41	NEUTRAL SWITCH ASS'Y	1
▶ 23 *	664-42738-00	PLATE, fitting	1
▶ 24 *	664-42748-00	GROMMET	1
▶ 25 *	664-42798-00	RIVET	2

The following parts are not used when using
the neutral switch ass'y.

2-48	656-15774-00	STAY 4	1
2-49	97313-06012	BOLT	1
2-50	92903-06100	WASHER	1

▶ (28AE S: 270941 and up
L: 571826 and up

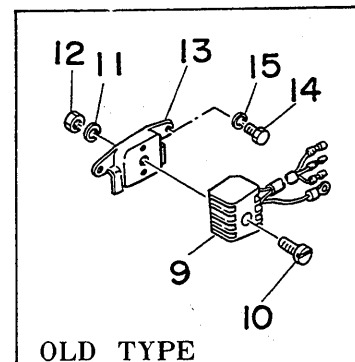
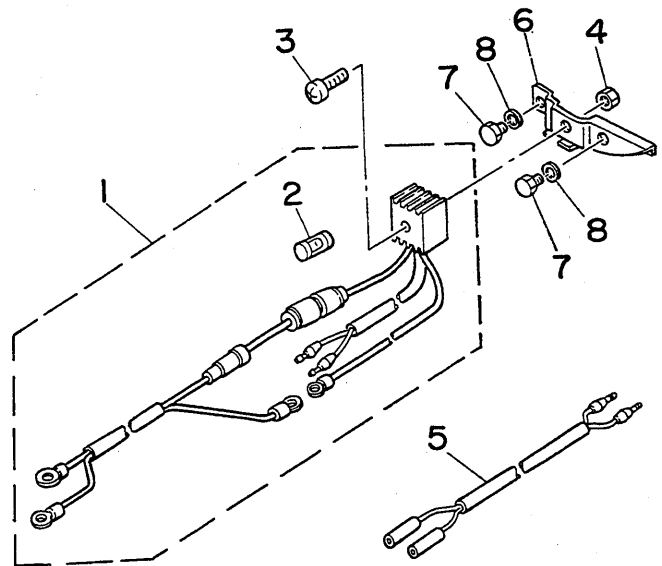
* New parts number

Fig. 1 Ref. No. 13



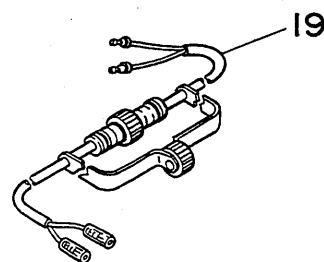
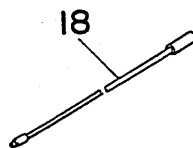
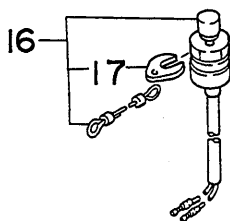
Fig. 15 ELECTRIC PARTS -1978

Ref.No.	Parts No.	Description	Q'ty
▶ 1 *	676-81970-00	RECTIFIER ASS'Y	1
▶ 2 *	663-82151-00	. FUSE (12V-20A)	1
▶ 3 *	97803-05025	SCREW, panhead	1
▶ 4 *	95303-05600	NUT	1
▶ 5 *	679-82553-G0	EXTENSION, wire lead	1
▶ 6 *	664-81975-00	PLATE, rectifier fitting	1
▶ 7 *	97313-06010	BOLT	2
▶ 8 *	92903-06600	WASHER	2
◀ 9	664-81970-60	RECTIFIER ASS'Y	1
◀ 10	98380-05018	SCREW, cylinderhead	1
◀ 11	92903-05100	WASHER	1
◀ 12	95380-05600	NUT	1
◀ 13	664-81975-40	PLATE, rectifier fitting	1
◀ 14	97313-06012	BOLT	2
◀ 15	92990-06100	WASHER	2
16	664-82575-41	KILL SWITCH ASS'Y	1
17	663-82556-70	. STOPPER	1
18	664-82521-00	WIRE, lead 1	2
19	616-83180-30	CONCENT 2P ASS'Y	1



- ◀ { 28A S: 154805 and below
 L: 453230 and below
 28AE S: 270940 and below
 L: 571825 and below
 ▶ { 28A S: 154806 and up
 L: 453231 and up
 28AE S: 270941 and up
 L: 571826 and up

* New parts number



1 Single

2 Twin

3 Double

4 M.T. Twin

5 Single For Left Handle

6 Double For Left Handle

Fig. 9 Ref. No. 54

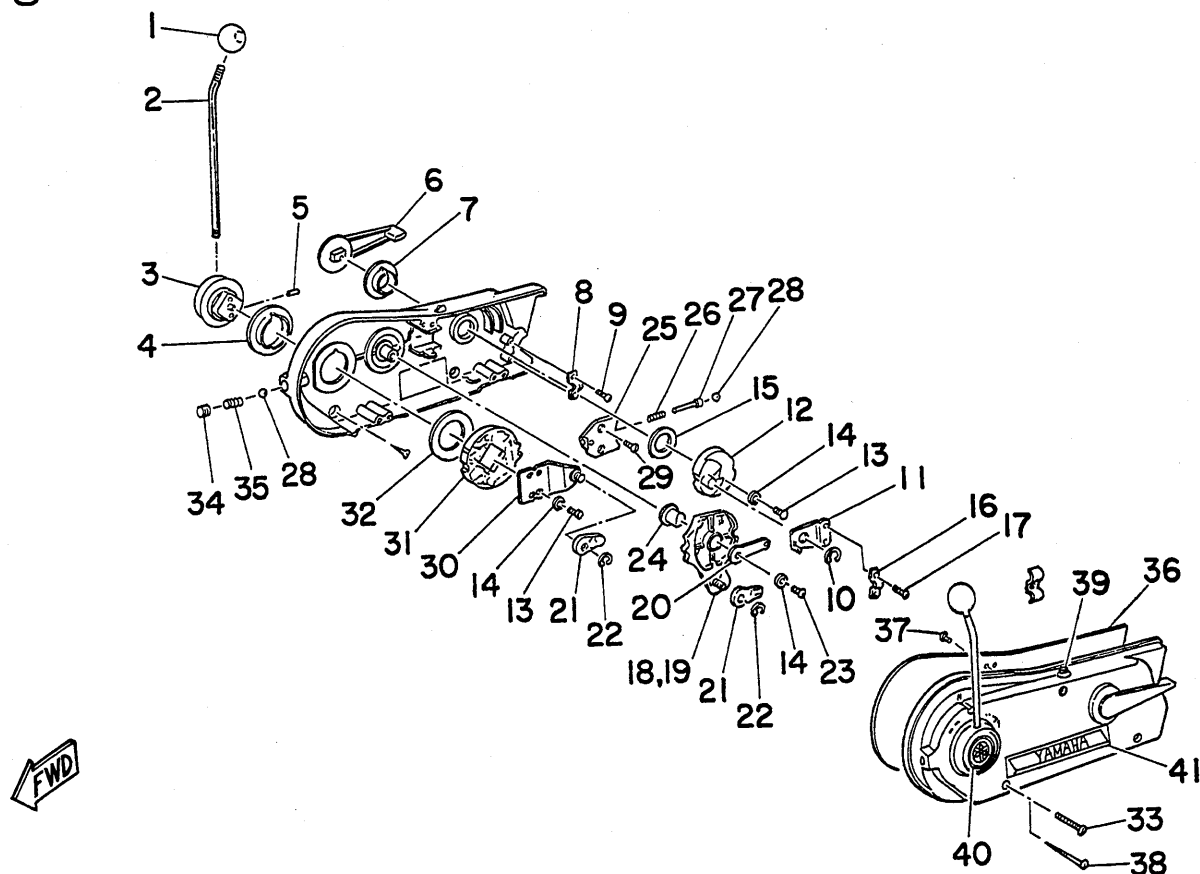
ROPE TYPE

BALL POST TYPE

FWD

▲ See Fig. 17 for detail service parts.
 † Superseded by new parts number

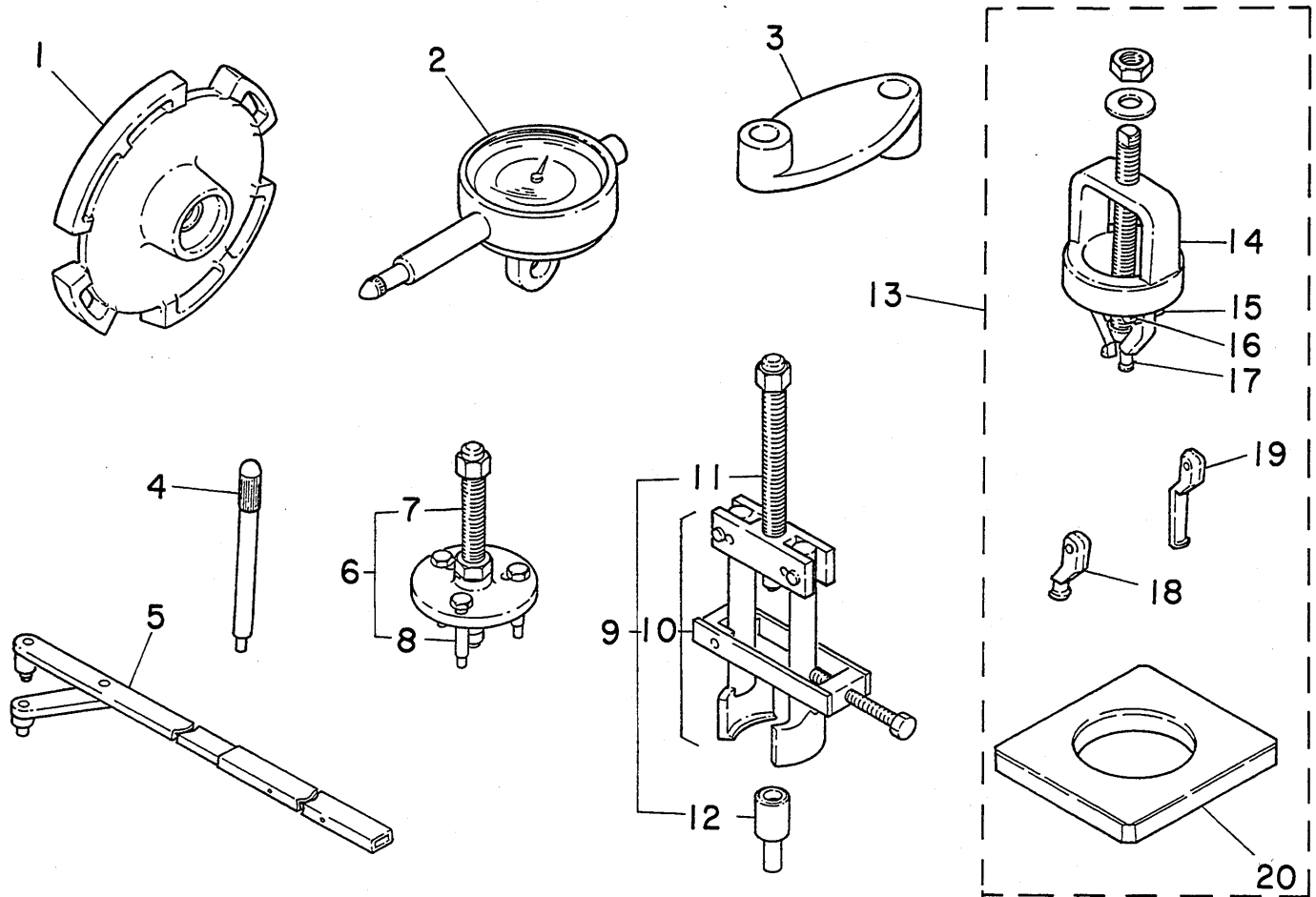
Fig. 17 REMOTE CONTROL ASS'Y -1978



Ref.No.	Parts No.	Description	Q'ty Single Twin	Ref.No.	Parts No.	Description	Q'ty Single Twin
※	701-48110-10	REMOTE CONTROL ASS'Y (See Fig. 16, Ref. No. 1)	1 -	21	701-48345-30	. CABLE END, remote control	2 4
※	701-48110-20	REMOTE CONTROL ASS'Y (See Fig. 16, Ref. No. 2)	- 1	22	93430-06024	. CIRCLIP (E-6φ)	2 4
1	701-48118-10	. GRIP, shift lever	1 2	23	90140-05008	. SCREW	1 2
2	701-48137-10	. LEVER, control	1 2	24	701-48165-10	. BUSHING	1 2
3	701-48114-10	. BOSS, control lever	1 2	25	701-48189-10	. RETAINER	1 2
4	701-48116-10	. BUSHING	1 2	26	701-48159-10	<i>Spring</i> . BUSHING 2	1 2
5	701-48127-10	. SCREW	1 2	27	701-48155-10	. PLUNGER	1 2
6	701-48152-10	. KNOB, free accel.	1 2	28	93503-08025	. BALL, steel	2 4
7	701-48191-10	. WASHER 1	1 2	29	90141-05005	. SCREW	2 4
8	701-48352-10	. ANCHOR, cable	1 2	30	701-48132-10	. LEVER, throttle 2	1 2
9	90146-05004	. SCREW, ovalhead	2 4	31	701-48131-10	. LEVER, throttle 1	1 2
10	93430-10025	. CIRCLIP (E-10φ)	1 2	32	701-48196-10	. WASHER, wave	1 2
11	701-48133-10	. PLATE, link	1 2	33	90130-05002	. SCREW	- 3
12	701-48153-10	. SHAFT, free accel.	1 2	34	701-48171-10	. BOLT	1 2
13	90146-06003	. SCREW, ovalhead	3 6	35	701-48158-10	. SPRING	1 2
14	92990-06300	. WASHER, tooth	3 6	36	701-48119-10	. COVER	1 1
15	701-48191-10	. WASHER 1	1 2	37	90140-05009	. SCREW	3 -
16	701-48352-10	. ANCHOR, cable	1 2	38	90130-05003	. SCREW	3 -
17	90146-05004	. SCREW, ovalhead	2 4	39	701-82550-50	. STOP SWITCH ASS'Y	1 2
18	701-48148-10	. LEVER, shift	- 1	40	701-48125-50	. MARK 1	1 1
19	701-48136-10	. LEVER, shift	1 1	41	701-48126-50	. MARK 2	1 1
20	701-48147-10	. PLATE, lock	1 2				

※ Not shown

Fig. 18 SPECIAL SERVICE TOOLS-1978

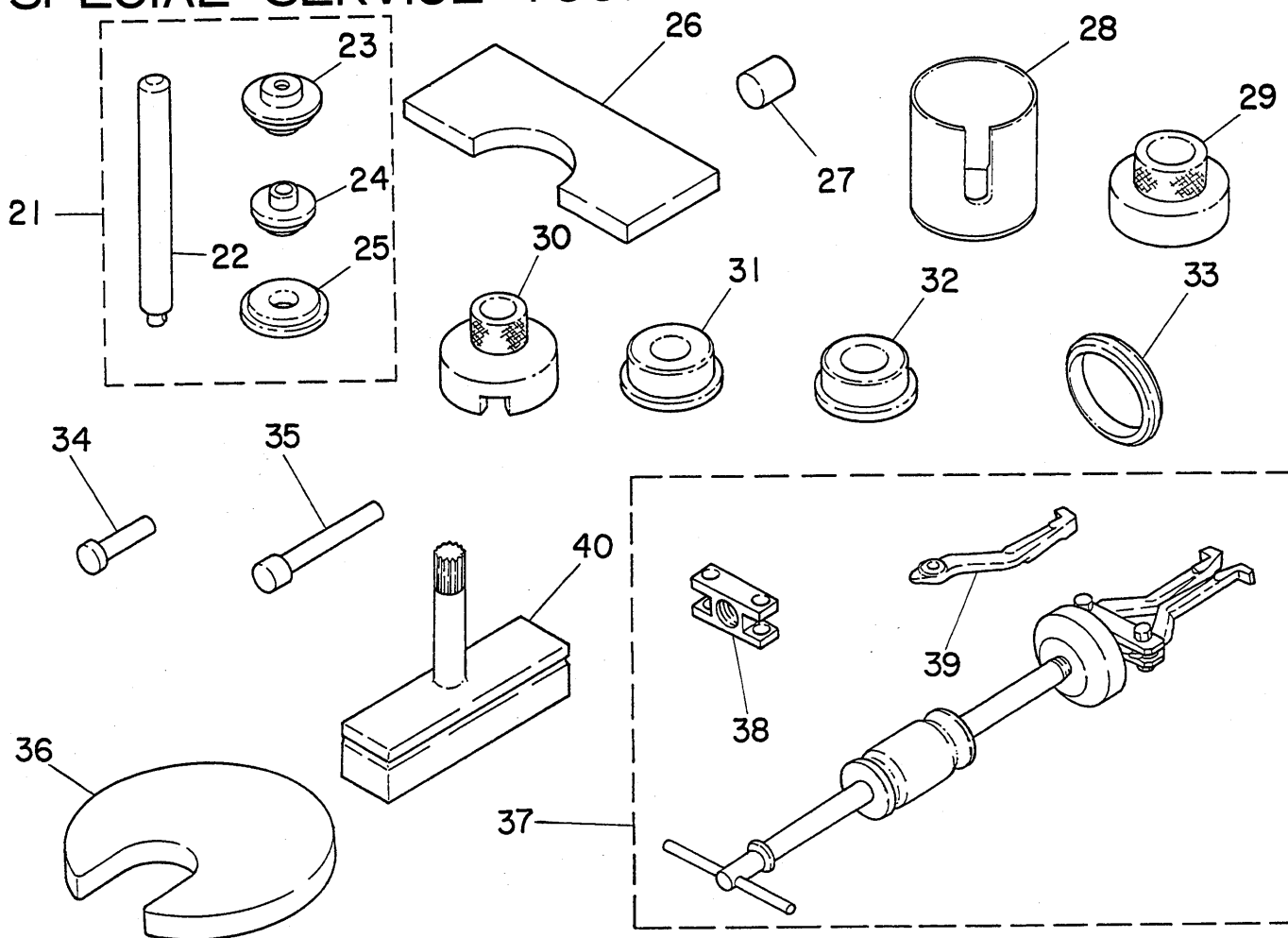


Ref. No.	Parts «No.	Description	Q'ty	Applicable Machine	Remarks
1	90890-01613	TEST PROPELLER	1	※	
2	90890-03097	DIAL GAUGE (1/100mm)	1	※※	
3	90890-01037	STAND 1, dial gauge	1	※※	
4	90890-03098	PLUNGER, dial gauge (56mm)	1	※※	
5	90890-06139	FLYWHEEL MAGNETO HOLDER ASS'Y	1s	※※	
6	90890-06117	FLYWHEEL MAGNETO PULLER ASS'Y	1s	※※	
7	90890-06003	. BOLT, center	1	※※	
8	90890-06118	. CENTER BOLT, flywheel puller	3	※※	
9	90890-06136	CRANK SHAFT BEARING PULLER ASS'Y	1s	※※	
10	90890-06137	. HANGER, bearing puller	1	※※	
11	90890-06003	. BOLT, center	1	※※	
12	90890-06007	. CASE, adjusting	1	※※	
13	90890-06120	BEARING PULLER ASS'Y	1s	※※	
14	90890-06033	. BOLT, center	1	※※	
15	90890-06009	. HANGER, claw	1	※※	
16	90890-06034	. PIN	2	※※	
17	90890-06035	. CLAW A	2	※※	
18	90890-06036	. CLAW B	2	※※	
19	90890-06089	. CLAW	2	※※	20A, 25A, 25B, 28A
20	90890-06073	. PLATE	1	※※	20A, 25A, 25B, 28A

Tools with ※ marks are for the use of 28A/28AE.

Tools with ※※ marks are for common use.

SPECIAL SERVICE TOOLS -1978

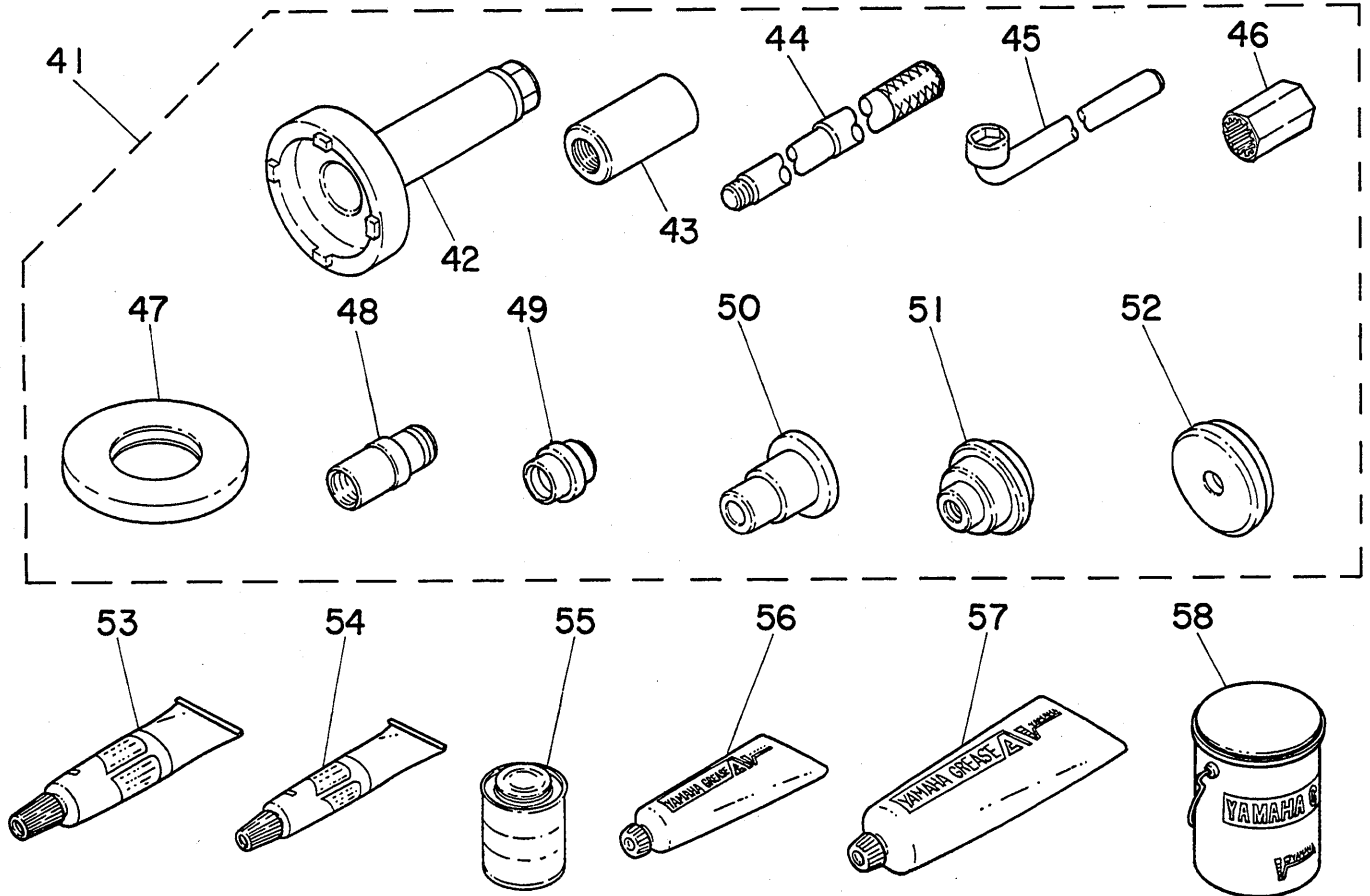


Ref. No.	Parts No.	Description	Q'ty	Applicable Machine	Remarks
21	90890-06121	BEARING INSTALLING TOOL ASS'Y	1s	※※	
22	90890-06013	. HANDLE	1	※※	
23	90890-06016	. ATTACHMENT C	1	※※	
24	90890-06017	. ATTACHMENT D	1	※※	
25	90890-06018	. GUIDE X	1	※※	
26	90890-02345	SUPPORT A	1	※※	
27	90890-06106	BEARING CON-ROD SMALL END INSTALLATION	1	※※	
28	90890-02329	BODY 1	1	※※	
29	90890-02330	BODY, press 1	1	※※	
30	90890-02331	BODY, press 2	1	※※	
31	90890-02333	SPACER B (d=25φ)	2	※※	
32	90890-02334	SPACER C (d=33φ)	1	※※	20A,25A,25B,28A
33	90890-02337	RING, spacer B (t=16mm)	1	※※	20A,25A,25B,28A
34	90890-02340	PIN, press A	1	※※	
35	90890-02341	PIN, press B	1	※※	
36	90890-02343	PLATE B	2	※※	20A,25A,25B,28A
37	90890-06096	SLIDE HAMMER PULLER ASS'Y	1	※※	
38	90890-06077	. HANGER	1	※※	
39	90890-06092	. CLAW, slide hammer puller	3	※※	
40	90890-06135	POWER UNIT STAND	1	※※	

Tools with ※ marks are for the use of 28A/28AE.

Tools with ※※ marks are for common use.

SPECIAL SERVICE TOOLS -1978



Ref. No.	Parts No.	Description	Q'ty	Applicable Machine	Remarks
41	90890-06086	28A TOOL KIT	1s	※	
42	90890-06075	. TORQUING TOOL, housing nut	1	※	
43	90890-06076	. PULLER, head	1	※	
44	90890-06071	. ROD, driver	1	※	
45	90890-06078	. WRENCH, pinion nut (B-12)	1	※	
46	90890-06079	. TORQUING TOOL, pinion nut	1	※	
47	90890-06080	. PLATE, needle bearing	1	※	
48	90890-06081	. ATTACHMENT, lower case	1	※	
49	90890-06082	. ATTACHMENT, housing	1	※	
50	90890-06083	. ATTACHMENT, housing	1	※	
51	90890-06084	. ATTACHMENT, housing oil seal	1	※	
52	90890-06085	. DRIVER HEAD, housing outer race	1	※	
YAMAHA BOND					
53	90890-05143	YAMAHA BOND 4	} U.R.		200g
54	90890-05144	YAMAHA BOND 5			150g
55	90890-05074	YAMAHA BOND 7			100g
YAMAHA GREASE					
56 *	90890-69910	YAMAHA GREASE A	} U.R.		50g
57 *	90890-69911	YAMAHA GREASE A			250g
58 *	90890-69912	YAMAHA GREASE A			4kg

Tools with ※ marks are for the use of 28A/28AE.

Tools with ※※ marks are for common use.

* New parts number

INTERCHANGEABILITY LIST

The following list shows the standard parts (Bolt, Washer etc.) which are newly added to this catalog and are interchangeable with the old standard parts.

As new parts are listed only in each section of the catalog, please refer to this list when you order these parts. (You will not need to order new parts if you have stock of the old ones as they are completely interchangeable each other.)

Please note we will supply you with new parts when we run out of old ones.

Old Parts No.	New Parts No.	Using Section
97370-06016	→ 90101-06M08	Fig 8-73, 16-11
97370-06025	→ 90101-06M09	Fig 8-61, 9-55
97323-06025	→ 90101-06M10	Fig 3-34
90101-06M03	→ 90101-06M11	Fig 7-23
97323-06030	→ 90101-06M12	Fig 3-35
97323-06035	→ 90101-06M13	Fig 3-36
97370-08060	→ 90101-08M18	Fig 8-86
97370-08100	→ 90101-08M19	Fig 8-87
97370-08020	→ 90101-08M20	Fig 8-93
97370-08016	→ 90101-08M21	Fig 8-92
97370-08030	→ 90101-08M23	Fig 6-4
97370-10035	→ 90101-10M26	Fig 6-15
97370-10040	→ 90101-10M27	Fig 16-31
97470-08020	→ 90105-08M02	Fig 7-13
90266-04002	→ 90266-04M00	Fig 1-10
97323-05010	→ 97313-05010	Fig 9-28
97323-06010	→ 97313-06010	Fig 1-20, 15-7
97323-06012	→ 97313-06012	Fig 2-49, 3-68, 5-17, 9-31, 14-20, 15-14
97323-06040	→ 97313-06014	Fig 5-22, 10-33, 13-23
97323-06015	→ 97313-06015	Fig 2-15
97323-06020	→ 97313-06020	Fig 2-46, 3-22, 3-39, 9-10, 10-21
97323-06025	→ 97313-06025	Fig 2-27, 4-10, 5-26
97323-06030	→ 97313-06030	Fig 2-30, 9-36
97323-06035	→ 97313-06035	Fig 4-11, 9-11
97323-06040	→ 97313-06040	Fig 2-28, 10-48, 11-25
97323-08025	→ 97313-08025	Fig 2-11

NUMERICAL INDEX

Ref. No.	Parts No.	Ref. No.	Parts No.	Ref. No.	Parts No.	Ref. No.	Parts No.	Ref. No.	Parts No.
13- 9	123-83516-21	4-34	648-14343-70	8-39	648-43633-00	13- 5	648-82502-41	2-35	656-15748-00
5-13	164-81246-21	4-38	648-14384-01	8-42	648-43642-00	13- 3	648-82508-40	2-40	656-15749-00
12-15	164-81246-21	4-35	648-14385-00	9-82	648-44146-00	13- 1	648-82570-40	2-37	656-15770-00
5-12	207-81331-10	4-36	648-14386-00	8-54	648-44508-01-F6	13- 2	648-82571-40	2-23	656-15771-00-94
12-14	207-81331-10	4-32	648-14390-14	8-54	648-44508-01-94	13-11	648-82572-40	2-25	656-15772-00-94
8-22	616-43118-00-F6	2-10	648-15717-00	8-67	648-44517-00	13- 6	648-82573-40	2-48	656-15774-00
15-19	616-83180-30	2- 7	648-15741-01	8-63	648-44519-00-F6	13-12	648-82580-40	14-19	656-15774-41
16-26	617-48331-90	2-14	648-15758-00-F6	8-63	648-44519-00-94	13- 4	648-82584-40	10- 1	656-24202-03-24
16-17	617-48346-90	1-11	648-15761-00	8-90	648-44557-03	13-10	648-82594-40	10- 1	656-24202-04-24
16-20	617-48361-90	2- 4	648-15771-00-94	8-75	648-44591-00	13- 8	648-83583-40	10- 1	656-24202-90-24
2-17	619-15755-01	2-26	648-15772-00-94	8-78	648-44591-00	13- 7	648-84301-40	10- 8	656-24241-03
3- 5	624-11379-00	2- 3	648-15773-00	8-96	648-44591-00	14- 9	648-86115-40	10- 2	656-24244-01
3- 3	624-14485-00	10-50	648-24312-01	8-72	648-44592-00	3- 4	650-11370-00	10- 3	656-24245-00
10-53	626-28193-01-94	10-37	648-24411-00	8-91	648-44593-00	10-18	650-24351-00	10- 4	656-24248-00
7-25	626-44365-01	10-56	648-24411-00	7-44	648-45633-00	10-16	650-24360-01	10- 6	656-24275-03
10-10	630-24329-00	10-44	648-24413-01	7-46	648-45634-00	10-47	650-24431-00	4-56	656-41241-00
4-43	646-14223-01	10-66	648-24413-01	7-45	648-45635-00	1- 5	650-42693-00	9- 9	656-42112-00-F6
4-41	646-14394-00	10-59	648-24421-00	16-22	648-48330-50	5-10	650-81321-10	9- 2	656-42126-01
4-42	646-14397-00	10-61	648-24422-01	16-16	648-48340-50	12-12	650-81321-10	9-51	656-42153-00-F6
4-45	647-14323-00	10-39	648-24423-00	16-23	648-48346-50	5-31	650-82370-00	9-51	656-42153-00-94
9-14	647-42177-00	10-58	648-24423-00	16-30	648-48511-00	3-19	655-12413-01-94	9- 7	656-42155-00
5- 4	647-81311-10	10-38	648-24424-00	16-13	648-48534-50-F6	3-20	655-12414-00	8- 1	656-42511-01-F6
12- 8	647-81311-10	10-57	648-24424-00	16-13	648-48534-50-94	10-20	655-24304-02	1- 7	656-42647-00
5- 5	647-81312-10	10-60	648-24431-00	12- 1	648-81300-63	10-13	655-24305-00	1-17	656-42816-00
12- 9	647-81312-10	10-40	648-24434-00	5- 3	648-81309-12	10-13	655-24305-01	8-20	656-43111-01-F6
5- 8	647-81313-41	10-55	648-24434-00	12- 7	648-81309-12	10-29	655-24521-00	8-21	656-43112-02-F6
12-17	647-81313-41	10-42	648-24435-02	5-14	648-81315-10	10-25	655-24560-00	8-29	656-43131-00
5- 6	647-81318-10	10-64	648-24435-02	12-16	648-81315-10	10-27	655-24563-00	8-51	656-43160-01
12-10	647-81318-10	10-65	648-24454-00	5- 2	648-81350-10	10-26	655-24564-00	8-52	656-43165-01
5- 7	647-81323-10	10-32	648-24566-01	12- 2	648-81350-11	4-16	656-W0004-00	8-26	656-43191-00
12-11	647-81323-10	4-52	648-41210-01	5-15	648-81362-01	2-34	656-W0079-00	8- 5	656-43311-00-F6
5- 9	647-81324-10	4-47	648-41216-01	5-16	648-81365-00	4-68	656-W0093-00	8-38	656-43631-00
12-18	647-81324-10	3-38	648-41616-00	11- 1	648-81800-41	3-53	656-11515-00	9-54	656-44111-01-F6
5-11	647-81325-11	9-43	648-41635-00	11- 9	648-81809-40	3-58	656-11610-01	9-63	656-44113-01
12-13	647-81325-11	8-12	648-42521-01-F6	11-13	648-81810-40	3-58	656-11610-02	16- 8	656-48501-01
3- 9	648-11175-00	8-12	648-42521-01-94	11-15	648-81811-40	3-58	656-11610-11	16- 8	656-48501-11
3-17	648-11175-00	8- 9	648-42528-00	11-16	648-81812-40	3-58	656-11610-12	16- 9	656-48531-50
3-44	648-11412-01	1-12	648-42615-00	11-17	648-81813-40	3-58	656-11610-21	16-10	656-48532-50
3-45	648-11422-01	1- 9	648-42651-00	11-18	648-81814-40	3-58	656-11610-22	5- 1	656-81300-61
3-46	648-11432-01	1- 3	648-42686-00	11-20	648-81820-40	3-57	656-11631-60-96	14-22	656-82540-41
3-61	648-11633-00	9-64	648-42715-00	11-21	648-81826-40	3-57	656-11631-60-97	13-14	656-82586-40
3-70	648-11650-00	8-55	648-42716-00	11-19	648-81827-40	3-57	656-11631-60-98	4-24	661-41262-02
3-48	648-11651-01	8-56	648-42718-00	11- 4	648-81828-40	3-57	656-11635-60	4-57	661-41262-02
3-49	648-11681-00	8-24	648-43114-01	11- 8	648-81829-40	3-57	656-11636-60	9-41	662-41237-00
4-15	648-13610-00	8-30	648-43136-00	11- 3	648-81830-41	3-18	656-12411-01	9-47	662-41237-00
4- 8	648-13621-00	8-27	648-43192-00	11-11	648-81832-40	4-15	656-13610-00	9-41	662-41237-01
4- 5	648-13641-01-94	8-27	648-43192-00-F6	11-10	648-81839-40	2- 9	656-15705-00	9-47	662-41237-01
4- 9	648-13645-00	8-46	648-43614-00	11- 7	648-81846-40	2- 1	656-15710-02-F6	10- 9	663-24264-00
4-17	648-14198-00	8-46	648-43614-00-F6	11-12	648-81850-40	2- 1	656-15710-03-F6	10- 7	663-24268-00
4-44	648-14321-00	8-47	648-43615-00	11- 2	648-81860-41	2- 2	656-15711-02-F6	10-12	663-24310-60
4-59	648-14331-00	8-47	648-43615-00-F6	11-14	648-81862-40	2- 2	656-15711-02-94	10-12	663-24310-61
4-46	648-14334-00	8-41	648-43616-00	12- 3	648-81891-00	2- 2	656-15711-03-94	10-19	663-24397-00
4-33	648-14341-00	8-45	648-43617-00	11-26	648-81893-40	2- 6	656-15714-00-94	10-54	663-24410-00

NUMERICAL INDEX

Ref. No.	Parts No.	Ref. No.	Parts No.	Ref. No.	Parts No.	Ref. No.	Parts No.	Ref. No.	Parts No.
10-43	663-24411-00	6- 9	664-41134-00	6- 2	664-45113-01	14- 4	664-82150-01	17-32	701-48196-10
10-41	663-24421-00	6-10	664-41135-00	6-13	664-45211-11-F6	5-24	664-82310-11	16- 7	701-48310-10
8- 8	663-45119-00	9-27	664-41213-00	6-13	664-45211-12-F6	5-24	664-82310-12	16- 7	701-48310-20
8-60	663-45119-00	4-49	664-41231-00	7- 6	664-45214-00	5-21	664-82316-01	16- 7	701-48310-40
14- 5	663-82151-00	4-22	664-41252-00	7- 7	664-45215-00	5-25	664-82320-11	16- 7	701-48310-60
15- 2	663-82151-00	4-25	664-41256-00	7- 1	664-45300-00-F6	5-25	664-82320-12	16- 7	701-48310-90
5-29	663-82370-01	4-20	664-41271-00	7- 1	664-45300-10-F6	13-19	664-82521-00	16- 7	701-48320-00
15-17	663-82556-70	3-24	664-41611-00-94	7- 2	664-45311-01-F6	15-18	664-82521-00	16- 7	701-48320-20
14-14	663-86117-00	3-25	664-41612-01	7-16	664-45321-00	13-20	664-82531-00	16- 7	701-48320-30
3-71	664-W0001-10	9-30	664-41615-01	7-55	664-45331-00-94	1-23	664-82550-00	16- 7	701-48320-50
7-67	664-W0001-30	9-33	664-41631-00-94	7-12	664-45371-01	15-16	664-82575-41	16- 7	701-48320-60
7-67	664-W0001-31	9-42	664-41636-00	7-60	664-45384-00	13-13	664-82590-00	16- 7	701-48320-80
6-18	664-W0072-01	9- 1	664-42111-01-F6	7-29	664-45501-00	14- 7	664-86111-00	16- 7	701-48320-90
6-18	664-W0072-02	9-13	664-42119-00	7-29	664-45501-10	14- 8	664-86112-00	17-21	701-48345-30
7-69	664-W0078-0A	9-15	664-42137-00	7-34	664-45536-00	14-16	664-86116-00	17- 8	701-48352-10
7-68	664-W0078-00	9-21	664-42138-00	7-37	664-45551-00	10-52	670-28100-60	17-16	701-48352-10
7-68	664-W0078-01	9-50	664-42154-01-94	7-36	664-45552-00	15- 1	676-81970-00	17-39	701-82550-50
3- 1	664-W0090-01	1- 1	664-42610-63-F6	7-41	664-45560-00	5- 8	677-81303-60	10- 5	802-24610-00
3-14	664-11111-00-94	1- 4	664-42687-60	7-39	664-45567-00-05	12-17	677-81303-60	8-73	90101-06M08
3-15	664-11181-00	1-13	664-42711-00-F6	7-39	664-45567-00-08	5-30	677-82370-00	16-11	90101-06M08
3-12	664-11325-00	9-59	664-42715-00	7-39	664-45567-00-12	10-36	679-24410-00	8-61	90101-06M09
3-43	664-11400-01	1-21	664-42724-00	7-39	664-45567-00-30	15- 5	679-82553-60	9-55	90101-06M09
3-47	664-11442-01	13-18	664-42724-40	7-39	664-45567-00-50	16-29	700-48510-12	3-34	90101-06M10
3-56	664-11630-00	14-23	664-42738-00	7-50	664-45571-00	16- 1	701-48110-10	7-23	90101-06M11
3-56	664-11630-10	14-24	664-42748-00	7-52	664-45576-00	16- 2	701-48110-20	3-35	90101-06M12
3-56	664-11630-20	14-25	664-42798-00	7-51	664-45577-00-05	16- 3	701-48110-30	3-36	90101-06M13
3-57	664-11631-00-96	1-14	664-42815-00-F6	7-51	664-45577-00-08	16- 4	701-48110-80	8-86	90101-08M18
3-57	664-11631-00-97	9-58	664-44113-00	7-51	664-45577-00-12	17- 3	701-48114-10	8-87	90101-08M19
3-57	664-11631-00-98	9-72	664-44121-02	7-51	664-45577-00-30	17- 4	701-48116-10	8-93	90101-08M20
3-57	664-11635-00	9-76	664-44125-00	7-51	664-45577-00-50	17- 1	701-48118-10	8-92	90101-08M21
3-57	664-11636-00	9-67	664-44142-00	7-33	664-45587-00-05	17-36	701-48119-10	6- 4	90101-08M23
4-60	664-14201-01	9-81	664-44143-00	7-33	664-45587-00-08	16- 5	701-48120-10	8-34	90101-08339
4-63	664-14218-00	7-15	664-44147-00	7-33	664-45587-00-12	16- 6	701-48120-30	6-15	90101-10M26
4-30	664-14301-02	7-14	664-44150-01	7-33	664-45587-00-30	17-40	701-48125-50	16-31	90101-10M27
4-58	664-14315-00	7-14	664-44150-11	7-33	664-45587-00-50	17-41	701-48126-50	7-13	90105-08M02
4-55	664-14327-00	9-60	664-44167-00	7-48	664-45611-00	17- 5	701-48127-10	7- 4	90105-10059
4-31	664-14342-00	7-20	664-44301-00	7-42	664-45631-00	17-31	701-48131-10	9-48	90116-05220
4-61	664-14357-00	7-20	664-44301-40	7-66	664-45911-01-36	17-30	701-48132-10	4- 7	90116-06122
4-62	664-14377-00	7-22	664-44323-00	7-66	664-45913-01-36	17-11	701-48133-10	4- 6	90116-06138
4-37	664-14381-00	7-22	664-44323-40	7-66	664-45941-01-36	17-19	701-48136-10	2-19	90116-08M01
4- 1	664-14417-00	7-28	664-44325-02	7-66	664-45943-01-36	17- 2	701-48137-10	2-38	90123-06049
9-38	664-14497-00	7-30	664-44338-00	7-66	664-45945-00-36	17-20	701-48147-10	9-23	90123-06065
3- 2	664-15100-02-94	7-21	664-44352-01	7-66	664-45947-00-36	17-18	701-48148-10	17-33	90130-05002
3- 2	664-15100-03-94	7-27	664-44361-00	7-66	664-45949-00-36	17- 6	701-48152-10	17-38	90130-05003
3-28	664-15359-01-94	7-27	664-44361-10	7-61	664-45987-00	17-12	701-48153-10	17-23	90140-05008
3-29	664-15369-00	7-26	664-44366-01	7-62	664-45997-00	17-27	701-48155-10	17-37	90140-05009
10-35	664-24311-00	8-79	664-44514-00-94	7-62	664-45997-01-94	17-35	701-48158-10	17-29	90141-05005
9-22	664-26311-01	8-71	664-44516-00	7-63	664-45998-00	17-26	701-48159-10	17- 9	90146-05004
3-32	664-41111-00	8-84	664-44551-00-F6	14- 1	664-81970-60	17-24	701-48165-10	17-17	90146-05004
3-31	664-41113-00-94	8-85	664-44552-00-F6	15- 9	664-81970-60	17-34	701-48171-10	17-13	90146-06003
3-33	664-41114-00	8-95	664-44555-00	15- 6	664-81975-00	17-25	701-48189-10	8-10	90149-08005
6- 7	664-41131-01-94	8-80	664-44591-00	15-13	664-81975-40	17- 7	701-48191-10	8-23	90149-14030
6- 8	664-41133-00	6- 1	664-45101-00-F6	13-15	664-82105-00	17-15	701-48191-10	13-17	90161-06001

NUMERICAL INDEX

Ref. No.	Parts No.	Ref. No.	Parts No.	Ref. No.	Parts No.	Ref. No.	Parts No.	Ref. No.	Parts No.
9-24	90170-06183	9-34	90387-06M02	18-29	90890-02330	18-56	90890-69910	13-24	92903-06100
9-83	90170-07021	9-35	90387-06298	18-30	90890-02331	18-57	90890-69911	14-21	92903-06100
5-19	90170-12066	4- 2	90387-06461	18-31	90890-02333	18-58	90890-69912	4-14	92903-06200
7-64	90171-14013	2-47	90387-06568	18-32	90890-02334	9-71	91490-12010	5-18	92903-06200
7-38	90179-08167	8-37	90387-09074	18-33	90890-02337	2-43	91490-16010	7-19	92903-06200
1- 6	90183-05003	7-11	90430-08020	18-34	90890-02340	8-49	91490-16010	9-32	92903-06200
7- 9	90185-05002	3-10	90445-07260	18-35	90890-02341	9-70	91490-16010	12- 6	92903-06200
9- 4	90185-06062	4-65	90445-09105	18-36	90890-02343	9-80	91490-20010	2-44	92903-06600
9-44	90201-05556	10-23	90445-09251	18-26	90890-02345	7-65	91490-30022	4-19	92903-06600
4-27	90201-05560	10-15	90445-12M04	18- 2	90890-03097	6-11	91490-30025	5-27	92903-06600
1-18	90201-06068	10-17	90445-12155	18- 4	90890-03098	8-53	91690-30008	15- 8	92903-06600
2-12	90201-08309	10-15	90445-12207	18-55	90890-05074	14-15	91690-30010	2-22	92903-08100
8-31	90201-10130	4-64	90446-05005	18-53	90890-05143	16-21	91690-30012	10-31	92903-08100
5-20	90201-12472	13-26	90446-15104	18-54	90890-05144	16-27	91690-30012	2-21	92903-08200
3-60	90201-18522	13-25	90446-15105	18- 7	90890-06003	8-28	91690-30016	9-18	92903-10600
7-49	90201-20540	3-67	90461-06015	18-11	90890-06003	4-23	91690-40016	4-40	92990-04100
3-21	90201-21567	10-51	90461-06015	18-12	90890-06007	9-77	91690-40016	4-54	92990-05100
3-64	90201-50306	13-27	90461-06015	18-15	90890-06009	9-53	91690-40018	10-46	92990-05100
9-68	90202-06007	13-22	90462-10018	18-22	90890-06013	2- 5	91690-40020	10-68	92990-05100
9-78	90202-06007	14- 6	90462-10021	18-23	90890-06016	3-13	92280-06020	4-50	92990-05200
9-75	90202-10024	5-28	90464-07015	18-24	90890-06017	3-26	92503-06020	9-79	92990-05200
9-57	90202-12031	13-16	90464-18018	18-25	90890-06018	8-77	92880-10200	9-69	92990-05600
9- 6	90202-34043	13-21	90465-10071	18-14	90890-06033	8-82	92880-10200	1-19	92990-06100
7- 5	90204-10006	4-67	90467-05001	18-16	90890-06034	8-97	92880-10200	8- 4	92990-06100
2-42	90206-05005	3-11	90467-06016	18-17	90890-06035	8-83	92890-10700	8-62	92990-06100
4-29	90206-05005	4-66	90467-08004	18-18	90890-06036	11-24	92901-04100	8-66	92990-06100
2-45	90206-08010	10-24	90467-08004	18-44	90890-06071	14-11	92903-03100	8-74	92990-06100
1-15	90206-12052	4-28	90468-10005	18-20	90890-06073	9-26	92903-05100	9-12	92990-06100
3-50	90209-22071	14-18	90480-10155	18-42	90890-06075	9-45	92903-05100	9-56	92990-06100
8-14	90209-47016	4-21	90480-12154	18-43	90890-06076	11-22	92903-05100	10-22	92990-06100
7-59	90214-45012	1-22	90480-12156	18-38	90890-06077	14- 3	92903-05100	15-15	92990-06100
4-26	90240-05044	13-28	90480-17165	18-45	90890-06078	14-13	92903-05100	17-14	92990-06300
8-48	90240-05046	16-28	90480-22039	18-46	90890-06079	15-11	92903-05100	7-18	92990-06600
8-16	90241-03001	8- 2	90480-29045	18-47	90890-06080	4- 4	92903-05300	7-24	92990-06600
8-25	90243-04001	9-62	90501-09M08	18-48	90890-06081	2-41	92903-05600	16-12	92990-06600
8-43	90249-06120	7-47	90501-10065	18-49	90890-06082	9-29	92903-05600	16-15	92990-06600
7-43	90250-05010	16-25	90501-10071	18-50	90890-06083	2-16	92903-06100	6- 5	92990-08100
1-10	90266-04M00	2-36	90501-10227	18-51	90890-06084	2-29	92903-06100	8-36	92990-08100
1- 8	90266-04012	16-19	90501-10264	18-52	90890-06085	2-32	92903-06100	8-89	92990-08100
9-16	90269-02001	9-65	90501-12333	18-41	90890-06086	2-50	92903-06100	8-94	92990-08100
5-32	90280-05013	9-61	90501-14M07	18-19	90890-06089	3-23	92903-06100	16-18	92990-08200
7-56	90282-04010	8-11	90501-16099	18-39	90890-06092	3-27	92903-06100	16-24	92990-08200
8- 6	90334-04002	9- 8	90501-20001	18-37	90890-06096	3-37	92903-06100	6- 6	92990-08600
7-10	90340-08014	9-19	90501-23215	18-27	90890-06106	3-41	92903-06100	8-70	92990-08600
8-58	90380-10M01	8-32	90504-59006	18- 6	90890-06117	3-69	92903-06100	6-16	92990-10100
8-57	90380-12012	8-50	90506-30055	18- 8	90890-06118	4-12	92903-06100	16-32	92990-10100
4-51	90386-05002	9-74	90508-14272	18-13	90890-06120	5-23	92903-06100	8-76	92990-10200
9-20	90386-08032	8-40	90508-16018	18-21	90890-06121	9-37	92903-06100	8-81	92990-10200
9-52	90386-10009	2- 4	90510-08002	18-40	90890-06135	9-40	92903-06100	6-17	92990-10600
1-16	90386-12069	9- 5	90560-14076	18- 9	90890-06136	10-34	92903-06100	16-33	92990-10600
8-17	90386-38022	18- 3	90890-01037	18-10	90890-06137	10-49	92903-06100	7-58	93101-20068
8-19	90386-38090	18- 1	90890-01613	18- 5	90890-06139	11- 5	92903-06100	7-31	93101-26073
8-15	90386-47092	18-28	90890-02329	12-18	90890-44373	12- 5	92903-06100	3-30	93102-23096

NUMERICAL INDEX

Ref. No.	Parts No.	Ref. No.	Parts No.	Ref. No.	Parts No.	Ref. No.	Parts No.	Ref. No.	Parts No.
3-65	93102-25114	8-88	95380-08600	10-11	98380-05018				
3-66	93104-16050	8-68	95380-08700	15-10	98380-05018				
14-17	93210-03261	8-33	95380-10600	14-10	98503-03006				
10-14	93210-08287	16-34	95380-10600	10-62	98503-03008				
9-73	93210-09M01	16-35	95480-51175	4-39	98503-04012				
3-63	93210-16275	12- 4	97303-06018	11-23	98503-04012				
10-28	93210-35339	9-28	97313-05010	10-45	98503-05028				
8-18	93210-37160	1-20	97313-06010	10-67	98503-05028				
7-53	93210-62274	15- 7	97313-06010	1- 2	99999-00921				
7-32	93306-00401	2-49	97313-06012						
7-54	93306-00606	3-68	97313-06012						
3-55	93306-30510	5-17	97313-06012						
3-51	93310-522A4	9-31	97313-06012						
7-35	93315-01725	14-20	97313-06012						
7-57	93315-22004	15-14	97313-06012						
7-40	93332-00005	5-22	97313-06014						
3-52	93390-00009	10-33	97313-06014						
4-48	93430-04031	13-23	97313-06014						
8-44	93430-05027	2-15	97313-06015						
2- 8	93430-06005	2-46	97313-06020						
17-22	93430-06024	3-22	97313-06020						
17-10	93430-10025	3-39	97313-06020						
3-54	93440-62057	9-10	97313-06020						
3-62	93450-20026	10-21	97313-06020						
9-66	93501-04011	2-27	97313-06025						
17-28	93503-08025	4-10	97313-06025						
3-59	93602-20M02	5-26	97313-06025						
3- 6	93606-12019	2-30	97313-06030						
6- 3	93606-12019	9-36	97313-06030						
6-14	93606-12019	4-11	97313-06035						
7- 3	93606-12019	9-11	97313-06035						
8-64	93606-12019	2-28	97313-06040						
8-13	93608-12063	10-48	97313-06040						
8- 7	93700-06004	11-25	97313-06040						
8-59	93700-06004	2-11	97313-08025						
3-42	94701-00040	3- 7	97313-08045						
11- 6	95301-06600	3-16	97313-08050						
9-49	95302-05600	3- 8	97313-08055						
9-46	95303-05600	9-39	97323-06014						
15- 4	95303-05600	2-31	97323-06020						
4-53	95303-05700	7-17	97370-06010						
2-33	95303-06600	16-14	97370-06012						
2-39	95303-06600	8-65	97370-06018						
3-40	95303-06600	8- 3	97370-06020						
4-13	95303-06600	9- 3	97370-06020						
4-18	95303-06600	9-25	97803-05010						
2-13	95303-08600	14-12	97803-05012						
2-20	95303-08600	14- 2	97803-05025						
10-30	95303-08600	15- 3	97803-05025						
8-69	95303-08700	4- 3	97803-05030						
10-63	95313-03600	6-12	97890-06015						
15-12	95380-05600	7- 8	98180-05025						
8-35	95380-08600	9-17	98180-05025						



YAMAHA MOTOR CO., LTD.

2500 SHINGAI IWATA-SHI SHIZUOKA-KEN JAPAN

Copyright

All rights reserved.

No part of this publication may be
reproduced without permission.

Printed in Japan

Jun. 1978

664-28198-01